

**DEED OF NOVATION AND VARIATION
OF THE
FUNDING AGREEMENT
FOR
ST FRANCIS C OF E PRIMARY SCHOOL**

The Parties to this Deed are:

- (1) **THE SECRETARY OF STATE FOR EDUCATION** of Sanctuary Buildings, Great Smith Street, London, SW1P 3BT (the "**Secretary of State**");
- (2) **KERNOW LEARNING MULTI ACADEMY TRUST**, a charitable company incorporated in England and Wales with registered company number 07394649 whose registered address is at Trenance Learning Academy, Trenance Road, Newquay, Cornwall TR7 2LU (the "**Incoming Academy Trust**"); and
- (3) **FALMOUTH MAT**, a charitable company incorporated in England and Wales with registered company number 07695977 whose registered address is at Falmouth School, Trescobeas Road, Falmouth, Cornwall TR11 4LH (the "**Outgoing Academy Trust**");

together referred to as the "**Parties**".

INTRODUCTION

- A. St Francis C of E Primary School is an academy within the meaning of the Academies Act 2010 (the "**Academy**") and is currently operated by the Outgoing Academy Trust (a single academy trust).
- B. The Secretary of State and the Outgoing Academy Trust entered into a Funding Agreement on 30th August 2017 (the "**Agreement**") for the maintenance and funding of the Academy (attached as Schedule 1).
- C. It is proposed that, with effect from 00.01 am on 1 September 2020 ("**Transfer Date**"), the Incoming Academy Trust will assume responsibility for the management and operation of the Academy in succession to the Outgoing Academy Trust.
- D. The Parties wish to novate the Agreement to the Incoming Academy Trust and the Secretary of State and the Incoming Academy Trust wish to vary the terms of the Agreement subject to the provisions of this Deed.

LEGAL AGREEMENT

1. Any word or phrase used in this Deed shall, if that word or phrase is defined in the Agreement, bear the meaning given to it in the Agreement.

NOVATION

2. The Outgoing Academy Trust transfers all its rights and obligations under the Agreement to the Incoming Academy Trust with effect from the Transfer Date. With effect from the Transfer Date and subject to the provisions of this Deed, the Incoming Academy Trust shall assume all the rights, benefits and obligations of the Outgoing Academy Trust under the Agreement and all references to the Outgoing Academy Trust in the Agreement shall be read and construed as references to the Incoming Academy Trust.
3. Not used.
4. With effect from the Transfer Date and subject to the provisions of this Deed, the Incoming Academy Trust agrees to perform the Agreement and be bound by its terms in every way as if it were the original party to it in place of the Outgoing Academy Trust.
5. With effect from the Transfer Date and subject to the provisions of this Deed, the Secretary of State agrees to perform the Agreement and be bound by its terms in every way as if the Incoming Academy Trust were the original party to it in place of the Outgoing Academy Trust.

OBLIGATIONS AND LIABILITIES

6. With effect from the Transfer Date, the Outgoing Academy Trust and the Secretary of State release each other from all future obligations to the other under the Agreement.
7. Each of the Outgoing Academy Trust and the Secretary of State release and discharge the other from all claims and demands under or in connection with the Agreement arising on or after the Transfer Date.
8. Each of the Incoming Academy Trust and the Secretary of State will have the right to enforce the Agreement and pursue any claims and demands under the Agreement against the other with respect to matters arising on or after the date of this Deed as though the Incoming Academy Trust were the original party to the Agreement instead of the Outgoing Academy Trust.

INDEMNITY

9. Not used.
10. The Incoming Academy Trust agrees to indemnify the Outgoing Academy Trust against any losses, liabilities, claims, damages or costs the Outgoing Academy Trust suffers or incurs under or in connection with the Agreement as a result of the Incoming Academy Trust's failure to perform or satisfy its obligations under the Agreement on or after the Transfer Date.

VARIATION

11. The Secretary of State and the Incoming Academy Trust agree that with effect from the Transfer Date the Agreement shall be amended and restated so as to take effect in the form of the supplemental funding agreement set out in Schedule 2 to this Deed (the "**Supplemental Funding Agreement**"), and that the Supplemental Funding Agreement shall be supplemental to the Incoming Academy Trust's master funding agreement.
12. As varied by this Deed, the Agreement shall remain in full force and effect.

GOVERNING LAW

13. This Deed shall be governed by and interpreted in accordance with English law.
14. The Parties irrevocably agree that the courts of England and Wales shall have exclusive jurisdiction to settle any dispute or claim that arises out of, or in connection with, this deed or its subject matter or formation (including non-contractual disputes or claims).

COUNTERPARTS

15. This Deed may be executed in any number of counterparts and by the parties to it on separate counterparts, each of which when so executed and delivered shall be an original, but all the counterparts shall together constitute one and the same instrument.

EXECUTED AND DELIVERED AS A DEED by the Parties on the day of 2020

EXECUTED as a deed by affixing the corporate seal)
of the **SECRETARY OF STATE FOR EDUCATION**)
authenticated by:-)

.....
Duly authorised by the **SECRETARY OF STATE FOR EDUCATION**

EXECUTED as a deed by
**KERNOW LEARNING MULTI ACADEMY
TRUST**

acting by one director in the presence of a
witness:

Director *K. M. Crosse*
Print name... *KATHLEEN MARY CROSSE*
Witness... *[Signature]*
Print name... *ANDEEA SOLIYS*
Address... *HOLLYTREE FM*
TRURO, TR4 8RJ
Occupation... *ADMINISTRATOR*

EXECUTED as a deed by
FALMOUTH MAT
acting by one director in the presence of a
witness:

Director
Print name.....
Witness.....
Print name.....
Address.....
.....
Occupation.....

**Schedule 1
Agreement**

FREEDOM OF INFORMATION REDACTION SHEET

St Francis C of E Primary School

Supplemental Funding Agreement

Exemptions in full n/a	
Partial exemptions Personal Information has been redacted from this document under Section 40 of the Freedom of Information (FOI) Act. Section 40 of the FOI Act concerns personal data within the meaning of the Data Protection Act 1998.	
Factors for disclosure	Factors for Withholding
<ul style="list-style-type: none">▪ further to the understanding of and increase participation in the public debate of issues concerning Academies.▪ to ensure transparency in the accountability of public funds	<ul style="list-style-type: none">▪ To comply with obligations under the Data Protection Act
<u>Reasons why public interest favours withholding information</u> Whilst releasing the majority of the St Francis C of E Primary School Supplemental Funding Agreement will further the public understanding of Academies. The whole of the St Francis C of E Primary School Supplemental Funding Agreement cannot be revealed. If the personal information redacted was to be revealed under the FOI Act, Personal Data and Commercial interests would be prejudiced.	

FALMOUTH MAT

**MAINSTREAM ACADEMY AND FREE SCHOOL:
SUPPLEMENTAL FUNDING AGREEMENT (APRIL 2016)**

ST FRANCIS C OF E PRIMARY SCHOOL

30 August 2017

Contents

FALMOUTH MAT	1
SUMMARY SHEET	4
Information about the Academy:	4
1. ESTABLISHING THE ACADEMY	8
Definitions and interpretation	8
The Academy	9
2. RUNNING OF THE ACADEMY	9
Teachers and staff	9
Pupils	9
SEN unit	9
Charging	9
Admissions	10
Curriculum	12
3. GRANT FUNDING	15
Calculation of GAG	15
Other relevant funding	16
4. LAND	16
Version 2: existing leasehold site	16
Version 3: existing site held under church supplemental agreement	21
5. TERMINATION	21
Termination by either party	21
Termination Warning Notice	22
Termination by the Secretary of State after inspection	23

Termination by the Secretary of State	23
Funding and admission during notice period	24
Notice of intention to terminate by Academy Trust	24
Effect of termination	26
6. OTHER CONTRACTUAL ARRANGEMENTS	28
Annexes	28
The Master Agreement	28
General	28
ANNEXES	31
7. PUPILS WITH SPECIAL EDUCATION NEEDS (SEN) AND DISABILITIES	31
8. ADMISSION OF PUPILS WITH SEN AND DISABILITIES	31

SUMMARY SHEET

Information about the Academy:

Name of Academy Trust	Falmouth MAT
Company number	07695977
Date of Master Funding Agreement	30-8-17
Name of academy	St Francis C of E Primary School
Opening date	1 September 2017
Type of academy (indicate whether academy or free school)	Mainstream Academy
Religious designation	Church of England
Wholly or partly selective	N/A
Name of predecessor school (where applicable)	St Francis C of E Primary School
Capacity number	420
Age range	4 - 11
Number of sixth form places	N/A
Number of boarding places	N/A
SEN unit / Resource provision	N/A
Land arrangements (Version 1-7 or other)	Versions 2 and 3
Address and title number of Leased Land	Longfield, Falmouth, Cornwall, TR11 4SU Title Number: CL252592

Please confirm which clause variations have been applied or marked as 'Not used'

Clause No.	Descriptor	Applied	Not used
1.I	Only applies to free schools and new provision academies		X
2.A.1	Clause applies where an academy was previously a VC or foundation school designated with a religious character		X
2.C, 2.D	Only applies where the academy has an SEN unit		X
2.E	Only applies where there was a predecessor independent school		X
2.G	Clause does not apply to free schools (unless there was a predecessor independent school), or new provision academies	X	
2.M	Clause applies only to academies and free schools designated with a religious character	X	
2.N	Clause applies only to academies that were formerly wholly selective grammar schools		X
2.O	Clause applies only to academies that were formerly partially selective grammar schools		X
2.T	Clause applies to free schools and new provision academies designated with a religious character		X
2.W	Clause only applies where the academy is designated with a religious character	X	
2.X	Clause only applies where the academy has not been designated with a religious character		X
2.Y	Clause applies where an academy was previously a VC school or foundation school designated with a religious character		X
2.Yc)	Sub-clause applies if the academy is designated with a denominational religious character – CE etc. rather than 'Christian'		X

Clause No.	Descriptor	Applied	Not used
3.A – 3.F	Option 1 applies to converter and sponsored academies: if used delete option 2	X	
3.A – 3.F	Option 2 applies to free schools and new provision academies: if used delete option 1		X
3.H	Clause relating to Start-up only applies in some cases (does not apply to academy converters)		X
3.J	Clause only applies to full sponsored and intermediate sponsored academies with approved Academy Action Plans		X
3.K	Clause does not apply to free schools (unless there was a predecessor independent school), or new provision academies	X	
5.G.1	Clause applies only to a boarding academy/free school.		X
5.I	Clause only applies to sponsored academies		X
5.K	Clause applies to free schools and may be applied to new provision academies		X
5.L	Clause applies to free schools and may be applied to new provision academies		X
5.M	Clause applies to free schools and may be applied to new provision academies		X
5.N	Clause applies to free schools and may be applied to new provision academies		X
5.O	Clause applies to free schools and may be applied to new provision academies		X
6.H	Clause only applies to schools which are designated with a Church of England or Roman Catholic character	X	

Please identify any other variations from the model that apply to this academy (e.g. clauses relating to PFI, or any required because the multi academy trust includes academies designated with different religious characters, or a

mixture of those designated with a religious character, and those which are not):

Additional clauses will be supplied by your project lead if needed.

Descriptor	Clause No.	Applied	Not used
Governance - Local Governing Body provision for former Voluntary Aided school	2.BB	X	

1. ESTABLISHING THE ACADEMY

- 1.A This Agreement made between the Secretary of State for Education and Falmouth MAT is supplemental to the master funding agreement made between the same parties and dated [30-8-] 2017 (the "Master Agreement").

Definitions and interpretation

- 1.B Except as expressly provided in this Agreement words and expressions defined in the Master Agreement will have those same meanings in this Agreement.
- 1.C The following capitalised words and expressions will have the following meanings:

"The Academy" means St Francis C of E Primary School.

"Coasting" has the meaning given by regulations under subsection (3) of section 60B of the Education and Inspections Act 2006 in relation to a school to which that section applies.

"SEN" means Special Educational Needs and the expressions "special educational needs" and "special educational provision" have the meaning set out in sections 20(1) and 21(2) of the Children and Families Act 2014.

"Termination Notice" means a notice sent by the Secretary of State to the Academy Trust, terminating this Agreement on the date specified in the notice.

"Termination Warning Notice" means a notice sent by the Secretary of State to the Academy Trust, stating his intention to terminate this Agreement.

- 1.D The Interpretation Act 1978 applies to this Agreement as it applies to an Act of Parliament.
- 1.E Reference in this Agreement to clauses and annexes will, unless otherwise stated, be to clauses and annexes to this Agreement.

The Academy

- 1.F The Academy is a Maintained Academy as defined in clause 1.4 of the Master Agreement.
- 1.G The Academy Trust will establish and maintain the Academy in accordance with the Master Agreement and this Agreement.
- 1.H The Academy Trust will open the Academy on 1 September 2017.
- 1.I Not used.

2. RUNNING OF THE ACADEMY

Teachers and staff

- 2.A Subject to clause 2.4 of the Master Agreement, 7.A of this Agreement and section 67 of the Children and Families Act 2014, the Academy Trust may, in accordance with any relevant Guidance, employ anyone it believes is suitably qualified or is otherwise eligible to plan and prepare lessons and courses for pupils, teach pupils, and assess and report on pupils' development, progress and attainment.

2.A.1 Not used.

Pupils

- 2.B The planned capacity of the Academy is 420 in the age range 4-11. The Academy will be an all ability inclusive school.

SEN unit

2.C Not used.

2.D Not used.

Charging

2.E Not used.

Admissions

- 2.F Subject to clauses 2.K– 2.L the Academy Trust will act in accordance with, and will ensure that its Independent Appeal Panel is trained to act in accordance with, the School Admissions Code and School Admission Appeals Code published by the DfE (the "Codes") and all relevant admissions law as they apply to foundation and voluntary aided schools, and with equalities law. Reference in the Codes or legislation to "admission authorities" will be deemed to be references to the Academy Trust.
- 2.G Pupils on roll in a Predecessor School which was a maintained or independent school will transfer automatically to the Academy on opening. All children already offered a place at that Predecessor School must be admitted to the Academy.
- 2.H The Academy Trust must participate in the local Fair Access Protocol. The Academy Trust must participate in the coordinated admission arrangements operated by the LA in whose area the Academy is situated. If the Academy is a free school, the Academy Trust is not required to participate in coordination for its first intake of pupils.
- 2.I The Academy Trust may determine admission arrangements (subject to consultation in line with the Codes) that give priority for admission to children attracting the Pupil Premium, including the service premium (the "pupil premium admission criterion"), but not above looked-after children and previously looked-after children.
- 2.J Where the Academy Trust applies the pupil premium admission criterion, it must provide information in its admission arrangements about eligibility for the premiums.
- 2.K For the purposes of applying the pupil premium admission criterion only, sections 1.9(f) and 2.4(a) of the School Admissions Code do not apply insofar as they prevent admission authorities from giving priority to children according to the financial or occupational status of parents or using supplementary forms that ask for:

- a) any personal details about their financial status; or
- b) whether parents are serving in the UK armed forces or were serving in the UK armed forces, and are exercising parental care and responsibility for the child in question.

2.L The Secretary of State may:

- a) direct the Academy Trust to admit a named pupil to the Academy:
 - i. following an application from an LA including complying with a school attendance order as defined in section 437 of the Education Act 1996. Before doing so the Secretary of State will consult the Academy Trust; or
 - ii. where in relation to a specific child or children the Academy Trust has failed to act in accordance with the Codes or this Agreement or has otherwise acted unlawfully; or
- b) direct the Academy Trust to amend its admission arrangements where they do not comply with the Codes or this Agreement, or are otherwise unlawful.

2.M The Academy is an Academy designated with a Church of England religious character. The relevant religious authority (i.e. the diocese, or foundation faith body) is the Diocese of Truro.

2.N Not used.

2.O Not used.

2.P The Academy Trust must ensure that parents and 'relevant children' (as described in the **Codes**) have the right to appeal to an Independent Appeal Panel if they are dissatisfied with an admission decision of the Academy Trust. The arrangements for appeals must comply with the Codes as they apply to foundation and voluntary aided schools. The determination of the appeal panel is binding on all parties.

- 2.Q Subject to clause 2.R, the meaning of "relevant area" for the purposes of consultation requirements in relation to admission arrangements is that determined by the relevant LA for maintained schools in the area in accordance with the Education (Relevant Areas for Consultation on Admission Arrangements) Regulations 1999.
- 2.R If the Academy does not consider the relevant area determined by the LA for the maintained schools in the area to be appropriate, it must apply to the Secretary of State by 1 August before the academic year in question for a determination of the appropriate relevant area for the Academy, setting out the reasons for this view. The Secretary of State will consult the Academy Trust and the LA in whose area the Academy is situated in reaching a decision.
- 2.S The Office of the Schools Adjudicator ("OSA") will consider objections to the Academy's admission arrangements (except objections against the agreed variations from the Codes specified at clause 2.K, over which it has no jurisdiction). The Academy Trust must therefore make it clear, when determining the Academy's admission arrangements, that objections should be submitted to the OSA. The OSA's determination of an objection is binding on the Academy and the Academy Trust must make appropriate changes to its admission arrangements as quickly as possible.
- 2.T Not used.

Curriculum

- 2.U The Academy Trust must provide for the teaching of religious education and a daily act of collective worship at the Academy.
- 2.V The Academy Trust must comply with section 71(1)-(6) and (8) of the School Standards and Framework Act 1998 as if the Academy were a community, foundation or voluntary school, and as if references to "religious education" and "religious worship" in that section were references to the religious education and religious worship provided by the Academy in accordance with clause 2.W.

- 2.W Subject to clause 2.V, where the academy is designated with a religious character (in accordance with section 124B of the School Standards and Framework Act 1998 or further to section 6(8) of the Academies Act 2010):
- a) provision must be made for religious education to be given to all pupils at the Academy in accordance with the tenets of the Academy's specified religion or religious denomination. This is subject to paragraph 4 of Schedule 19 to the School Standards and Framework Act 1998, which applies as if the Academy were a voluntary aided school with a religious character;
 - b) the Academy Trust must comply with section 70(1) of, and Schedule 20 to, the School Standards and Framework Act 1998 as if the Academy were a foundation school with a religious character or a voluntary school, and as if references to "the required collective worship" were references to collective worship in accordance with the tenets and practices of the Academy's specified religion or religious denomination;
 - c) the Academy Trust must ensure that the quality of religious education given to pupils at the Academy and the contents of the Academy's collective worship given in accordance with the tenets and practices of its specific religion or religious denomination are inspected. The inspection must be conducted by a person chosen by the Academy Trust, and the Academy Trust must ensure that the inspection complies with the statutory provisions and regulations which would apply if the Academy were a foundation or voluntary school designated as having a religious character.
- 2.X Not used.
- 2.Y Not used.
- 2.Z The Academy Trust must have regard to any Guidance, further to section 403 of the Education Act 1996, on sex and relationship education to ensure that children at the Academy are protected from inappropriate teaching materials and that they learn the nature of marriage and its importance for family life

and for bringing up children. The Academy Trust must also have regard to the requirements in section 405 of the Education Act 1996, as if the Academy were a maintained school.

- 2.AA The Academy Trust must prevent political indoctrination, and secure the balanced treatment of political issues, in line with the requirements for maintained schools set out in the Education Act 1996, and have regard to any Guidance.

Governance

2.BB The Academy Trust shall establish for the Academy a Local Governing Body (and the same Local Governing Body may be appointed for more than one Academy) to which it may delegate any of its powers and functions in relation to the operation of the Academy. The role of the Local Governing Body and the membership of it shall be for the Academy Trust to decide, but the Academy Trust will unless otherwise agreed with Askel Veur the Diocese of Truro Academies Umbrella Trust Company (company number 7817737), as a minimum, ensure that the Local Governing Body is constituted as follows:

- a) a minimum of two parents of a pupil at the Academy/Academies (to be elected by the parents of registered pupils of the Academy/Academies) shall be members of the Local Governing Body;
- b) up to two employees at the Academy/Academies (to be elected by employees of the Academy/Academies) may be members of the Local Governing Body; and
- c) other members of the Local Governing Body appointed by Askel Veur the Diocese of Truro Academies Umbrella Trust Company (company number 7817737).

PROVIDED THAT those members of the Local Governing Body appointed under clause 2.BB (c) above always constitute the majority of the total members of the Local Governing Body.

3. GRANT FUNDING

Calculation of GAG

3A-3D. Not used.

3.E The Secretary of State will calculate GAG based on the pupil count at the Academy. In order to calculate GAG for the Academy Financial Year in which the Academy opens, the pupil count will be determined on the same basis as that used by the relevant LA for determining the budget of the maintained Predecessor School.

3.F For Academy Financial Years after that referred to in clause 3.E, the basis of the pupil count for determining GAG will be:

- a) for pupils in Year 11 and below, the Schools Census which is used to fund maintained schools for the financial year overlapping with the Academy Financial Year in question; and
- b) for pupils in Year 12 and above, the formula which is in use at the time for maintained schools.

3.G The Secretary of State may, at his discretion, adjust the basis of the pupil count to take account of any diseconomies of scale which may affect the Academy if it is operating below the planned capacity in clause 2.B. If such an adjustment is made in any Academy Financial Year, this will not change the basis of the pupil count for calculating the following Academy Financial Year's GAG. If the Secretary of State has indicated that additional grant may be payable in such circumstances, the Academy Trust will bid for this additional grant based on need and providing appropriate supporting evidence. The Secretary of State may accept or refuse the bid at his discretion.

3.H Not used.

3.I The Secretary of State recognises that if a Termination Notice or a Termination Warning Notice is served, or the Master Agreement is otherwise terminated, the intake of new pupils during the notice period may decline and

therefore payments based on the number of pupils attending the Academy may be insufficient to meet the Academy's needs. In these circumstances the Secretary of State may pay a larger GAG in the notice period, to enable the Academy to operate effectively.

Other relevant funding

3.J Not used.

3.K The Secretary of State may pay the Academy Trust's costs in connection with the transfer of employees from a Predecessor School under the Transfer of Undertakings (Protection of Employment) Regulations 2006. Such payment will be agreed on a case-by-case basis. The Academy Trust must not budget for such a payment unless the Secretary of State confirms in writing that it will be paid.

Carrying forward of funds

3.L Any additional grant made in accordance with clause 3.I, for a period after the Secretary of State has served a Termination Notice or a Termination Warning Notice under this Agreement, or otherwise terminates the Master Agreement, may be carried forward without limitation or deduction until the circumstances set out in clause 3.I cease to apply or the Academy closes.

4. LAND

Version 2: existing leasehold site

"Leased Land" means the playing field at St Francis Church of England Primary School, Longfield, Falmouth, Cornwall, TR11 4SU, being the land registered with title number CL252592 and demised by the Lease.

"Lease" means the lease or other occupational agreement between the Academy Trust and a third party (the "Landlord") under which the Academy Trust derives title to the Leased Land.

"Property Notice" means any order, notice, proposal, demand or other requirement issued by any competent authority (including the Landlord) which materially affects the Academy Trust's ability to use the Leased Land for the purposes of the Academy.

Restrictions on Leased Land transfer

4.A The Academy Trust must:

- a) within 28 days of the signing of this Agreement in circumstances where the Leased Land is transferred to the Academy Trust prior to the date of this Agreement, or otherwise within 28 days of the transfer of the Leased Land to the Academy Trust, apply to the Land Registry using Form RX1 for the following restriction (the "Restriction") to be entered in the proprietorship register for the Leased Land:

No disposition of the registered estate by the proprietor of the registered estate is to be registered without a written consent signed by the Secretary of State for Education, of Sanctuary Buildings, Great Smith Street, London SW1P 3BT;

- b) take any further steps reasonably required to ensure that the Restriction is entered on the proprietorship register;
- c) promptly confirm to the Secretary of State when the Restriction has been registered;
- d) if it has not registered the Restriction, permit the Secretary of State to do so in its place; and
- e) not, without the Secretary of State's consent, apply to disapply, modify, cancel or remove the Restriction, whether by itself, a holding company, a subsidiary company, or a receiver, administrator or liquidator acting in the name of the Academy Trust.

Obligations of the Academy Trust

4.B The Academy Trust must keep the Leased Land clean and tidy and make

good any damage or deterioration to the Leased Land. The Academy Trust must not do anything to lessen the value or marketability of the Leased Land without the Secretary of State's consent.

4.C The Academy Trust must comply with the Lease and promptly enforce its rights against the Landlord.

4.D The Academy Trust must not, without the Secretary of State's consent:

- a) terminate, vary, surrender, renew, dispose of or agree any revised rent under the Lease;
 - b) grant any consent or licence; or
 - c) create or allow any encumbrance; or
 - d) part with or share possession or occupation; or
 - e) enter into any onerous or restrictive obligations,
- in respect of all or part of the Leased Land.

Option

4.E The Academy Trust grants and the Secretary of State accepts an option (the "Option") to acquire the Leased Land at nil consideration. The Secretary of State may exercise the Option in writing on termination of this Agreement. If the Option is exercised, completion will take place 28 days after the exercise date in accordance with the Law Society's Standard Conditions of Sale for Commercial Property in force at that date.

Option Notice

4.F The Academy Trust:

- a) must, within 14 days after acquiring the Leased Land or, if later, after signing this Agreement, apply to the Land Registry on Form AN1 (including a copy of this Agreement) for a notice of the Option (the "Option Notice") to be entered in the register, taking any further steps

required to have the Option Notice registered and promptly confirming to the Secretary of State when this has been done;

- b) if it has not registered the Option Notice, agrees that the Secretary of State may apply to register it using Form UN1;
- c) must not, without the Secretary of State's consent, apply to disapply, modify or remove the Option Notice, whether by itself, a holding company, a subsidiary company, or a receiver, administrator or liquidator acting in the name of the Academy Trust, and
- d) must, in the case of previously unregistered land, within 14 days after acquiring the Leased Land or, if later, after signing this Agreement, apply to register a Class C(iv) land charge in the Land Charges Registry, and send the Secretary of State a copy of the relevant entry within 7 days after the registration has been completed. If the Secretary of State considers that the Academy Trust has not complied with this clause, he may apply to secure the registration.

Property Notices

4.G If the Academy Trust receives a Property Notice, it must:

- a) send a copy of it to the Secretary of State within 14 days, stating how the Academy Trust intends to respond to it;
- b) promptly give the Secretary of State all the information he asks for about it;
- c) allow the Secretary of State to take all necessary action, with or instead of the Academy Trust, to comply with it, and
- d) use its best endeavours to help the Secretary of State in connection with it.

Breach of Lease

4.H If the Academy Trust is, or if it is reasonably foreseeable that it will be, in

material breach of the Lease, the Academy Trust must immediately give written notice to the Secretary of State stating what the breach is and what action the Academy Trust has taken or proposes to take to remedy it, including timescales where appropriate.

- 4.I After notifying the Secretary of State under clause 4.H, the Academy Trust must:
- a) promptly give the Secretary of State all the information he asks for about the breach;
 - b) allow the Secretary of State to take all necessary action, with or instead of the Academy Trust, to remedy or prevent the breach, and
 - c) use its best endeavours to help the Secretary of State to remedy or prevent the breach.

Sharing the Leased Land

4.J Where:

- a) the Secretary of State identifies basic or parental need for additional places in the area in which the Academy is situated; and
- b) the Secretary of State then considers that not all the Leased Land is needed for the operation of the Academy at planned capacity,

the Secretary of State must consult with the Academy Trust to determine whether part of the Leased Land could be demised or sublet to another Academy Trust, as the Secretary of State considers appropriate, for the purpose of that Academy Trust establishing and maintaining an educational institution on the Leased Land.

- 4.K To the extent the Academy Trust and the Secretary of State agree to part of the Leased Land being demised or sublet in accordance with clause 4.J, the Academy Trust must use its best endeavours to procure either the approval of the Landlord or any necessary amendments to the Lease in order to enable it to share occupation of the Leased Land with the incoming Academy Trust and

to provide the incoming Academy Trust with security of tenure over the Leased Land occupied by it, and shall enter into any legal arrangements which the Secretary of State requires for this purpose. The Secretary of State shall meet the necessary and reasonable costs incurred by the Academy Trust in connection with this clause.

4.L For the purposes of clause 4.J:

- a) a **basic need** will arise when the forecast demand for pupil places in the area where the Academy is situated is greater than the existing capacity to provide them;
- b) a **parental need** will arise when the DfE is actually aware of an additional demand for pupil places in the area where the Academy is situated, following representations from parents in that area; and
- c) **planned capacity** has the meaning given in clause 2.B.

Version 3: existing site held under church supplemental agreement

The parties' rights and obligations in respect of the Diocesan Land are set out in the Church Supplemental Agreement dated [30 - 8 -] 2017 and made between (1) the Secretary of State; (2) the Academy Trust; (3) The Truro Board of Finance Ltd and (4) The Diocesan Board of Education of the Diocese of Truro. For the purposes of this clause, Diocesan Land has the meaning given to "Land" in the Church Supplemental Agreement.

5. TERMINATION

Termination by either party

- 5.A Either party may give at least seven Academy Financial Years' notice to terminate this Agreement. Such termination would take effect on 31 August of the relevant year.

Termination Warning Notice

- 5.B The Secretary of State may serve a Termination Warning Notice where he considers that:
- a) the Academy Trust has breached the provisions of this Agreement or the Master Agreement; or
 - b) the standards of performance of pupils at the Academy are unacceptably low; or
 - c) there has been a serious breakdown in the way the Academy is managed or governed; or
 - d) the safety of pupils or staff is threatened, including due to breakdown of discipline; or
 - e) the Academy is coasting provided he has notified the Academy Trust that it is coasting.
- 5.C A Termination Warning Notice served under clause 5.B will specify:
- a) the action the Academy Trust must take;
 - b) the date by which the action must be completed; and
 - c) the date by which the Academy Trust must make any representations, or confirm that it agrees to undertake the specified action.
- 5.D The Secretary of State will consider any representations from the Academy Trust which he receives by the date specified in the Termination Warning Notice. The Secretary of State may amend the Termination Warning Notice to specify further action which the Academy Trust must take, and the date by which it must be completed.
- 5.E If the Secretary of State considers that the Academy Trust has not responded to the Termination Warning Notice as specified under clause 5.C(c), or has not completed the action required in the Termination Warning Notice as specified under clauses 5.C(a) and (b) (and any further action specified under

clause 5.D) he may serve a Termination Notice.

Termination by the Secretary of State after inspection

5.F If the Chief Inspector gives notice to the Academy Trust that:

- a) special measures are required to be taken in relation to the Academy;
or
- b) the Academy requires significant improvement

the Secretary of State may serve a Termination Warning Notice, specifying the date by which the Academy Trust must make any representations.

5.G In deciding whether to give notice of his intention to terminate under clause 5.F, the Secretary of State will have due regard to the overall performance of the Academy Trust.

5.G.1 Not used.

5.H If the Secretary of State has served a Termination Warning Notice under clause 5.F and:

- a) has not received any representations from the Academy Trust by the date specified in the notice; or
- b) having considered the representations made by the Academy Trust remains satisfied that this Agreement should be terminated;

he may serve a Termination Notice.

5.I Not used.

Termination by the Secretary of State

5.J If the Secretary of State has determined that the Academy will be removed from the Register of Independent Schools and no appeal against that determination is pending, he may serve a Termination Notice.

5.K Not used.

- 5.L Not used.
- 5.M Not used.
- 5.N Not used.
- 5.O Not used.

Funding and admission during notice period

- 5.P If the Secretary of State serves a Termination Notice under clause 5.A, the Academy Trust may continue during the notice period to admit pupils to the Academy, and to receive GAG and EAG, in accordance with this Agreement.
- 5.Q If the Secretary of State serves a Termination Warning Notice or a Termination Notice otherwise than under clause 5.A, the Academy Trust may continue during the notice period to admit pupils to the Academy (unless the Secretary of State specifies otherwise), and to receive GAG and EAG, in accordance with this Agreement.

Notice of intention to terminate by Academy Trust

- 5.R The Secretary of State will, before the start of each Academy Financial Year, provide the Academy Trust with a final funding allocation indicating the level of GAG and EAG to be provided in the next Academy Financial Year (the "**Funding Allocation**").
- 5.S If the Academy Trust is of the opinion that, after receipt of the Funding Allocation for the next Academy Financial Year (the "**Critical Year**") and after taking into account all other resources likely to be available to the Academy, including other funds that are likely to be available to the Academy from other academies operated by the Academy Trust ("**All Other Resources**"), it is likely that the cost of running the Academy during the Critical Year would cause the Academy Trust to become insolvent (and for this reason only) then the Academy Trust may give written notice of its intention to terminate this Agreement on 31 August before the Critical Year.

5.T Any notice given by the Academy Trust under clause 5.S must be provided to the Secretary of State within six weeks of the Secretary of State issuing the Funding Allocation. The notice given by the Academy Trust under clause 5.S must specify:

- a) the grounds upon which the Academy Trust's opinion is based, including:
 - i. evidence of those grounds;
 - ii. any professional accounting advice the Academy Trust has received;
 - iii. a detailed statement of steps which the Academy Trust proposes to take to ensure that the running costs of the Academy are reduced such that costs are less than the Funding Allocation and All Other Resources, and the period of time within which such steps will be taken; and
- b) the shortfall in the Critical Year between the Funding Allocation and All Other Resources expected to be available to the Academy Trust to run the Academy and the projected expenditure on the Academy; and
- c) a detailed budget of income and expenditure for the Academy during the Critical Year (the "**Projected Budget**").

5.U Both parties will use their best endeavours to agree whether or not the cost of running the Academy during the Critical Year would cause the Academy Trust to become insolvent. Both parties recognise that they will need to engage in a constructive dialogue at the time about how best to provide education for the pupils at the Academy and use their best endeavours to agree a practical solution to the problem.

5.V If no agreement is reached by 30 April (or another date if agreed between the parties) as to whether the cost of running the Academy during the Critical Year would cause the Academy Trust to become insolvent, then that question will be referred to an independent expert (the "**Expert**") for resolution. The

Expert's determination will be final and binding on both parties. The Expert will be requested to specify in his determination the amount of the shortfall in funding (the "Shortfall").

- 5.W The Expert will be an insolvency practitioner with significant professional experience of educational institutions or academies. If the parties fail to agree upon the appointment of the Expert then the Expert will be appointed by the President of the Institute of Chartered Accountants in England and Wales. The Expert's fees will be borne equally between the parties.
- 5.X The Expert will be required in reaching his determination to take account of advice from an educational specialist who is professionally familiar with the issues arising from the budget management of schools. If the parties fail to agree upon the appointment of the educational specialist then the educational specialist will be appointed by the Chairman of the Specialist Schools and Academies Trust (or any successor or equivalent body). The educational specialist's fees will be borne equally between the parties.
- 5.Y If the Expert determines that the cost of running the Academy during the Critical Year would cause the Academy Trust to become insolvent, and the Secretary of State will not have agreed to provide sufficient additional funding to cover the Shortfall, then the Academy Trust will be entitled to terminate this Agreement, by notice expiring on 31 August before the Critical Year. Any such notice will be given within 21 days after (a) the Expert's determination will have been given to the parties or (b), if later, the Secretary of State will have given written notice of his refusal to provide sufficient additional funding for the Academy to cover the Shortfall.

Effect of termination

- 5.Z If this Agreement is terminated, the Academy will cease to be an Academy within the meaning of sections 1 and 1A of the Academies Act 2010.
- 5.AA Subject to clauses 5.BB and 5.CC, if the Secretary of State terminates this Agreement under clause 5.A, he will indemnify the Academy Trust. If the Secretary of State terminates this Agreement otherwise than under clause

- 5.A, he may at his discretion indemnify or compensate the Academy Trust.
- 5.BB The amount of any such indemnity or compensation will be determined by the Secretary of State, having regard to representations made to him by the Academy Trust, and will be paid as and when the Secretary of State considers appropriate.
- 5.CC The categories of expenditure incurred by the Academy Trust in consequence of termination, for which the Secretary of State may indemnify the Academy Trust under clauses 5.AA, may include:
- a) staff compensation and redundancy payments;
 - b) compensation payments in respect of broken contracts;
 - c) expenses of disposing of assets or adapting them for other purposes;
 - d) legal and other professional fees; and
 - e) dissolution expenses.
- 5.DD If this Agreement is terminated, and the Academy Trust owns capital assets which have been partly or wholly funded by HM Government, the Academy Trust must, as soon as possible after the termination date:
- a) transfer a proportion of those capital assets, equal to the proportion of the original financial contribution made by HM Government, to a nominee of the Secretary of State to use for educational purposes; or
 - b) if the Secretary of State directs that a transfer under clause 5.DD(a) is not required, pay to the Secretary of State at the termination date (or, by agreement with the Secretary of State, at the date of their subsequent disposal) a sum equivalent to the proportion of the original financial contribution made by HM Government.
- 5.EE The Secretary of State may:
- a) Waive all or part of the repayment due under sub-clause 5.DD(b) if the Academy Trust obtains his permission to invest the sale proceeds for

its charitable purposes; or

- b) direct the Academy Trust to pay all or part of the sale proceeds to the relevant LA.

6. OTHER CONTRACTUAL ARRANGEMENTS

Annexes

- 6.A Any annexes to this Agreement form part of and are incorporated into this Agreement.

The Master Agreement

- 6.B Except as expressly provided in this Agreement, all provisions of the Master Agreement have full force and effect.

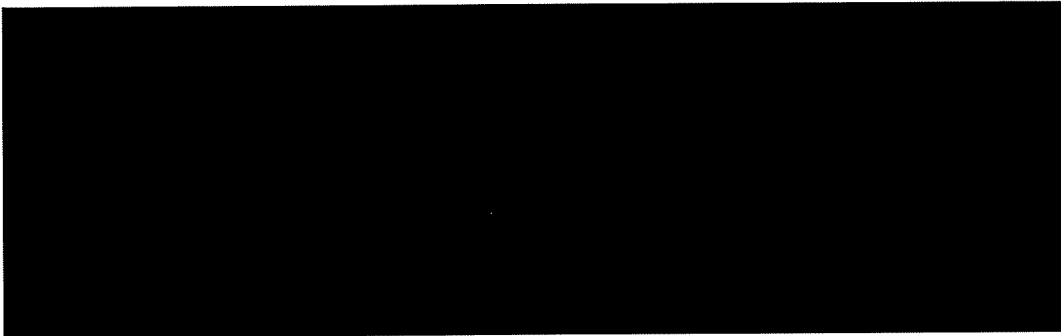
General

- 6.C The Academy Trust cannot assign this Agreement.
- 6.D Failure to exercise, or a delay in exercising, any right or remedy of the Secretary of State under this Agreement (including the right to terminate this Agreement), or a single or partial exercise of such a right or remedy, is not a waiver of, and does not prevent or restrict any initial or further exercise of, that or any other right or remedy.
- 6.E Termination of this Agreement will not affect the accrued rights, remedies, obligations or liabilities of the parties existing at termination.
- 6.F This Agreement may be executed in any number of counterparts, each of which when executed and delivered shall constitute a duplicate original, but all of which will together constitute the same agreement.
- 6.G This Agreement and any dispute or claim arising out of or in connection with it or its subject matter or formation (including non-contractual disputes or claims) shall be governed by and construed in accordance with the law of England and Wales, and submitted to the exclusive jurisdiction of the courts of England and Wales.

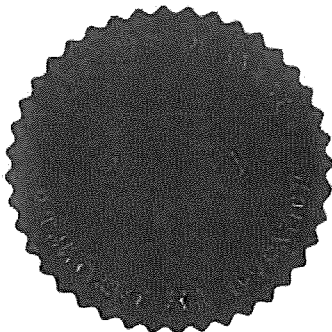
6.H The Secretary of State agrees that this Agreement shall be interpreted in a way which is compatible with the provisions of clauses 20A-F and 23A-H (if used) of the Church Supplemental Agreement dated [20-8-] 2017 and made between (1) the Secretary of State; (2) the Academy Trust; (3) The Diocesan Board of Finance Ltd; and (4) The Diocesan Board of Education of the Diocese of Truro.

This Agreement was executed as a Deed on 30-8-2017

Executed on behalf of the **Academy Trust** by:



The Corporate Seal of
THE SECRETARY OF STATE FOR EDUCATION
affixed to this deed is authenticated by:



April 2016 v5

ANNEXES

7. PUPILS WITH SPECIAL EDUCATION NEEDS (SEN) AND DISABILITIES

"Statement of SEN" means a statement made under section 324 of the Education Act 1996.

"EHC plan" means an Education, Health and Care plan made under sections 37(2) of the Children and Families Act 2014.

7.A Except as set out in clause 8 below, the Children and Families Act 2014 imposes duties directly on Academies in respect of pupils with special educational needs, including the admission of pupils with EHC plans. If an Academy Trust considers that a LA should not have named the Academy in an EHC plan, it may ask the Secretary of State to determine whether the LA has acted unreasonably, and to make an order directing the LA to reconsider. The Secretary of State's determination will be final, subject to any right of appeal which a parent of the child may have to the First Tier Tribunal (Special Educational Needs and Disability) or the Upper Tribunal Administrative Appeals Chamber.

7.B Not used.

7.C Not used.

7.D Not used.

8. ADMISSION OF PUPILS WITH SEN AND DISABILITIES

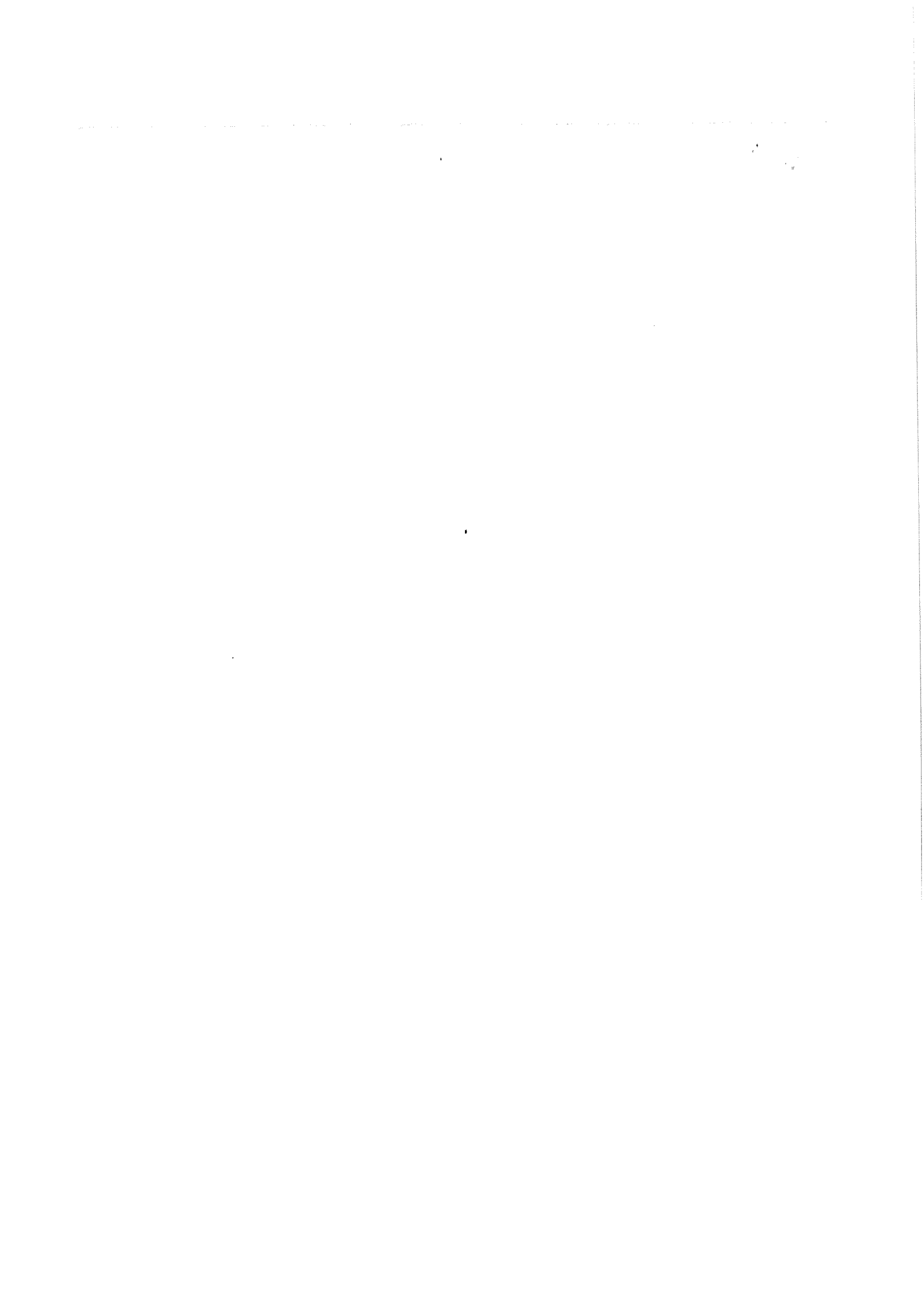
8.A The Academy Trust must for each of its Academies, subject to its right of appeal to the Secretary of State, admit all pupils with a statement of SEN naming the Academy.

8.B Where an LA proposes to name one of the Academies in a statement of SEN, it must give the Academy Trust written notice of this, stating why it considers that Academy to be suitable for the pupil in question. Within 15 days of receipt of the LA's notice, the Academy Trust must consent to being named, except

where admitting the child would be incompatible with the provision of efficient education for other children, and no reasonable steps could secure compatibility. In deciding whether a child's inclusion would be incompatible with the efficient education of other children or the efficient use of resources, the Academy Trust must have regard to the relevant Guidance issued to maintained schools.

- 8.C If the Academy Trust decides that admitting the child would be incompatible with the provision of efficient education or the efficient use of resources, it must, within the 15 days, notify the LA in writing, giving its reasons for its decision.
- 8.D The Academy Trust must then seek to establish from the LA whether or not it agrees with this determination. If the LA does not agree with the Academy Trust's response, and names the Academy in the child's statement of SEN, the Academy Trust must admit the child to the school as specified in the statement or otherwise by the LA.
- 8.E If in such case, the Academy Trust considers that the LA should not have named the Academy in the statement, it may ask the Secretary of State to determine whether the LA has acted unreasonably, and to make an order directing the LA to reconsider. The Secretary of State's determination will be final, subject only to any right of appeal which a parent of the child may have to the First-tier Tribunal (Special Educational Needs and Disability) or the Upper Tribunal Administrative Appeals Chamber.
- 8.F If a parent of a child for whom the LA maintains a statement appeals to the First-tier Tribunal (Special Educational Needs and Disability), either for or against the naming of the Academy in the child's statement, then the Tribunal's decision will be binding, even if it is different from that of the Secretary of State.
- 8.G Where it has been finally determined that the Academy be named in a child's statement of SEN, the Academy Trust must admit the child to the Academy, notwithstanding any other admissions requirements in this Agreement.

8.H Clauses 8.A to 8.G only apply insofar as the relevant provisions of the Children and Families Act 2014 relating to SEN and disability do not apply to Academies and Free Schools.





Department
for Education

Mainstream academy and free school: supplemental funding agreement

March 2018 v6

Contents

SUMMARY SHEET	4
Information about the Academy:	4
1. ESTABLISHING THE ACADEMY	8
Definitions and interpretation	8
The Academy	9
2. RUNNING OF THE ACADEMY	9
Teachers and staff	9
Pupils	9
Admissions	10
Curriculum	12
3. GRANT FUNDING	14
Calculation of GAG	14
Other relevant funding	16
4. LAND	16
5. TERMINATION	21
Termination by either party	21
Termination Warning Notice	21
Termination by the Secretary of State after inspection	22
Termination by the Secretary of State	23
Funding and admission during notice period	23
Notice of intention to terminate by Academy Trust	24
Effect of termination	26
6. OTHER CONTRACTUAL ARRANGEMENTS	27

Annexes	27
The Master Agreement	27
General	27
ANNEXES	30
7. ADMISSION OF CHILDREN AND YOUNG PEOPLE WITH EDUCATION, HEALTH AND CARE PLANS	30
8. ADMISSION OF CHILDREN WITH A STATEMENT OF SPECIAL EDUCATIONAL NEEDS	30

SUMMARY SHEET

Information about the Academy:

Name of Academy Trust	Kernow Learning Multi Academy Trust
Company number	07394649
Date of Master Funding Agreement	30 th June 2016 as varied by a Deed of Variation dated 28 th August 2019
Name of academy	St Francis C of E Primary School
Date opened	1 st September 2017
Type of academy (indicate whether academy or free school)	Mainstream Academy
Religious designation	Church of England
Wholly or partly selective	N/A
Name of predecessor school (where applicable)	St Francis C of E Primary School
Capacity number	420
Age range	4-11
Number of sixth form places	N/A
Number of boarding places	N/A
SEN unit / Resource provision	N/A
Land arrangements (Version 1-8 or other)	Versions 2 and 3
Address and title number of Land	Longfield, Falmouth, Cornwall TR11 4SU Land Registry title number: CL334298 and CL57778 and CL115892

Please confirm which clause variations have been applied or marked as 'Not used'

Clause No.	Descriptor	Applied	Not used
1.I	Only applies to free schools and new provision academies		X
2.A.1	Clause applies where an academy was previously a VC or foundation school designated with a religious character		X
2.C, 2.D	Only applies where the academy has an SEN unit		X
2.E	Only applies where there was a predecessor independent school		X
2.G	Clause does not apply to free schools (unless there was a predecessor independent school), or new provision academies	X	
2.M	Clause applies only to academies and free schools designated with a religious character	X	
2.N	Clause applies only to academies that were formerly wholly selective grammar schools		X
2.O	Clause applies only to academies that were formerly partially selective grammar schools		X
2.T	Clause applies to free schools and new provision academies designated with a religious character		X
2.W	Clause only applies where the academy is designated with a religious character	X	
2.X	Clause only applies where the academy has not been designated with a religious character		X
2.Y	Clause applies where an academy was previously a VC school or foundation school designated with a religious character		X
2.Yc)	Sub-clause applies if the academy is designated with a denominational religious character – CE etc. rather than 'Christian'		X

Clause No.	Descriptor	Applied	Not used
3.A – 3.F	Option 1 applies to converter and sponsored academies: if used delete option 2	x	
3.A – 3.F	Option 2 applies to free schools and new provision academies: if used delete option 1		x
3.H	Clause relating to Start-up only applies in some cases (does not apply to academy converters)		x
3.J	Clause only applies to full sponsored and intermediate sponsored academies with approved Academy Action Plans		x
3.K	Clause does not apply to free schools (unless there was a predecessor independent school), or new provision academies	x	
5.G.1	Clause applies only to a boarding academy/free school.		x
5.I	Clause only applies to sponsored academies		x
5.K	Clause applies to free schools and may be applied to new provision academies		x
5.L	Clause applies to free schools and may be applied to new provision academies		x
5.M	Clause applies to free schools and may be applied to new provision academies		x
5.N	Clause applies to free schools and may be applied to new provision academies		x
5.O	Clause applies to free schools and may be applied to new provision academies		x
6.H	Clause only applies to schools which are designated with a Church of England or Roman Catholic character	x	

Please identify any other variations from the model that apply to this academy (e.g. clauses relating to PFI, or any required because the multi academy trust includes academies designated with different religious characters, or a

mixture of those designated with a religious character, and those which are not):

Additional clauses will be supplied by your project lead if needed.

Descriptor	Clause No.	Applied	Not used
Governance – Local Governing Body provision for former Voluntary Aided school	2.BB	x	

1. ESTABLISHING THE ACADEMY

1.A This Agreement made between the Secretary of State for Education and Kernow Learning Multi Academy Trust is supplemental to the master funding agreement made between the same parties and dated 30th June 2016 as varied by a Deed of Variation dated 28th August 2019 (the “**Master Agreement**”).

Definitions and interpretation

1.B Except as expressly provided in this Agreement words and expressions defined in the Master Agreement will have those same meanings in this Agreement.

1.C The following capitalised words and expressions will have the following meanings:

“The **Academy**” means St Francis C of E Primary School.

“**Coasting**” has the meaning given by regulations under subsection (3) of section 60B of the Education and Inspections Act 2006 in relation to a school to which that section applies.

“**SEN**” means Special Educational Needs and the expressions “**special educational needs**” and “**special educational provision**” have the meaning set out in sections 20(1) and 21(2) of the Children and Families Act 2014.

“**Termination Notice**” means a notice sent by the Secretary of State to the Academy Trust, terminating this Agreement on the date specified in the notice.

“**Termination Warning Notice**” means a notice sent by the Secretary of State to the Academy Trust, stating his intention to terminate this Agreement.

1.D The Interpretation Act 1978 applies to this Agreement as it applies to an Act of Parliament.

1.E Reference in this Agreement to clauses and annexes will, unless otherwise stated, be to clauses and annexes to this Agreement.

The Academy

- 1.F The Academy is a Mainstream Academy as defined in clause 1.4 of the Master Agreement.
- 1.G The Academy Trust will establish and maintain the Academy in accordance with the Master Agreement and this Agreement.
- 1.H The Academy Trust opened the Academy on 1st September 2017.
- 1.I Not used.

2. RUNNING OF THE ACADEMY

Teachers and staff

- 2.A Subject to clause 2.A.2 and 7.A of this Agreement and section 67 of the Children and Families Act 2014, the Academy Trust may, in accordance with any relevant Guidance, employ anyone it believes is suitably qualified or is otherwise eligible to plan and prepare lessons and courses for pupils, teach pupils, and assess and report on pupils' development, progress and attainment.
- 2.A.1 Not used.
- 2.A.2 The Academy Trust must designate a staff member at the Academy as responsible for promoting the educational achievement of registered pupils at the Academy who are being looked after by an LA, or are no longer looked after by an LA because of an adoption, special guardianship or child arrangements order, or because they have been adopted from 'state care' outside England and Wales, and in doing so must comply with the law, regulations and guidance that apply to maintained schools. The Academy Trust must ensure the designated person undertakes appropriate training and has regard to any guidance issued by the Secretary of State.

Pupils

- 2.B The planned capacity of the Academy is 420 in the age range 4-11. The

Academy will be an all ability inclusive school.

2.C Not used.

2.D Not used.

2.E Not used.

Admissions

2.F Subject to clauses 2.K– 2.L the Academy Trust will act in accordance with, and will ensure that its Independent Appeal Panel is trained to act in accordance with, the School Admissions Code and School Admission Appeals Code published by the DfE (the “Codes”) and all relevant admissions law as they apply to foundation and voluntary aided schools, and with equalities law. Reference in the Codes or legislation to “admission authorities” will be deemed to be references to the Academy Trust.

2.G Pupils on roll in a Predecessor School which was a maintained or independent school will transfer automatically to the Academy on opening. All children already offered a place at that Predecessor School must be admitted to the Academy.

2.H The Academy Trust must participate in the local Fair Access Protocol. The Academy Trust must participate in the coordinated admission arrangements operated by the LA in whose area the Academy is situated. If the Academy is a free school, the Academy Trust is not required to participate in coordination for its first intake of pupils.

2.I Not used.

2.J Not used.

2.K Not used.

2.L The Secretary of State may:

a) direct the Academy Trust to admit a named pupil to the Academy:

- i. following an application from an LA including complying with a school attendance order as defined in section 437 of the Education Act 1996. Before doing so the Secretary of State will consult the Academy Trust; or
 - ii. where in relation to a specific child or children the Academy Trust has failed to act in accordance with the Codes or this Agreement or has otherwise acted unlawfully; or
 - b) direct the Academy Trust to amend its admission arrangements where they do not comply with the Codes or this Agreement, or are otherwise unlawful.
- 2.M The Academy is an Academy designated with a Church of England religious character. The relevant religious authority (i.e. the diocese, or foundation faith body) is the Diocese of Truro.
- 2.N Not used.
- 2.O Not used.
- 2.P The Academy Trust must make arrangements to ensure an independent appeals panel is established for the Academy and its clerk and members are trained to act in accordance with the Codes. The Academy Trust must ensure that parents and 'relevant children' (as described in the Codes) are informed of their right to appeal to an Independent Appeal Panel if they are dissatisfied with an admission decision of the Academy Trust. The arrangements for appeals must comply with the Codes as they apply to foundation and voluntary aided schools. The determination of the appeal panel is binding on all parties.
- 2.Q Subject to clause 2.R, the meaning of "**relevant area**" for the purposes of consultation requirements in relation to admission arrangements is that determined by the relevant LA for maintained schools in the area in accordance with the Education (Relevant Areas for Consultation on Admission Arrangements) Regulations 1999.

- 2.R If the Academy does not consider the relevant area determined by the LA for the maintained schools in the area to be appropriate, it must apply to the Secretary of State by 1 August before the academic year in question for a determination of the appropriate relevant area for the Academy, setting out the reasons for this view. The Secretary of State will consult the Academy Trust and the LA in whose area the Academy is situated in reaching a decision.
- 2.S The Office of the Schools Adjudicator (“OSA”) will consider objections to the Academy’s admission arrangements (except objections against any agreed derogations from the provisions of the Codes specified in this funding agreement, over which it has no jurisdiction). The Academy Trust must therefore make it clear, when determining the Academy’s admission arrangements, that objections should be submitted to the OSA. The OSA’s determination of an objection is binding on the Academy and the Academy Trust must make appropriate changes to its admission arrangements to give effect to the Adjudicator’s decision within two months of the decision (or by 28 February following the decision, whichever is sooner), unless an alternative timescale is specified by the Adjudicator.
- 2.T Not used.

Curriculum

- 2.U The Academy Trust must provide for the teaching of religious education and a daily act of collective worship at the Academy.
- 2.V The Academy Trust must comply with section 71(1)-(6) and (8) of the School Standards and Framework Act 1998 as if the Academy were a community, foundation or voluntary school, and as if references to “religious education” and “religious worship” in that section were references to the religious education and religious worship provided by the Academy in accordance with clause 2.X.
- 2.W Subject to clause 2.V, where the **academy is designated with a religious character** (in accordance with section 124B of the School Standards and

Framework Act 1998 or further to section 6(8) of the Academies Act 2010):

- a) provision must be made for religious education to be given to all pupils at the Academy in accordance with the tenets of the Academy's specified religion or religious denomination. This is subject to paragraph 4 of Schedule 19 to the School Standards and Framework Act 1998, which applies as if the Academy were a voluntary aided school with a religious character;
- b) the Academy Trust must comply with section 70(1) of, and Schedule 20 to, the School Standards and Framework Act 1998 as if the Academy were a foundation school with a religious character or a voluntary school, and as if references to "the required collective worship" were references to collective worship in accordance with the tenets and practices of the Academy's specified religion or religious denomination;
- c) the Academy Trust must ensure that the quality of religious education given to pupils at the Academy and the contents of the Academy's collective worship given in accordance with the tenets and practices of its specific religion or religious denomination are inspected. The inspection must be conducted by a person chosen by the Academy Trust, and the Academy Trust must ensure that the inspection complies with the statutory provisions and regulations which would apply if the Academy were a foundation or voluntary school designated as having a religious character.

2.X Not used.

2.Y Not used.

2.Z The Academy Trust must have regard to any Guidance, further to section 403 of the Education Act 1996, on sex and relationship education to ensure that children at the Academy are protected from inappropriate teaching materials and that they learn the nature of marriage and its importance for family life and for bringing up children. The Academy Trust must also have regard to the requirements in section 405 of the Education Act 1996, as if the Academy

were a maintained school.

- 2.AA The Academy Trust must prevent political indoctrination, and secure the balanced treatment of political issues, in line with the requirements for maintained schools set out in the Education Act 1996, and have regard to any Guidance.

Governance

- 2.BB The Academy Trust shall establish for the Academy a Local Governing Body (and the same Local Governing Body may be appointed for more than one Academy) to which it may delegate any of its powers and functions in relation to the operation of the Academy. The role of the Local Governing Body and the membership of it shall be for the Academy Trust to decide, but the Academy Trust will unless otherwise agreed with Askel Veur the Diocese of Truro Academies Umbrella Trust Company (company number 7817737), as a minimum, ensure that the Local Governing Body is constituted as follows:

- a. a minimum of two parents of a pupil at the Academy/Academies (to be elected by the parents of registered pupils of the Academy/Academies) shall be members of the Local Governing Body;
- b. up to two employees of the Academy/Academies (to be elected by employees of the Academy/Academies) may be members of the Local Governing Body; and
- c. other members of the Local Governing Body appointed by Askel Veur the Diocese of Truro Academies Umbrella Trust Company (company number 7817737).

PROVIDED THAT the members of the Local Governing Body appointed under clause 2.BB(c) above constitute the majority of the total members of the Local Governing Body.

3. GRANT FUNDING

Calculation of GAG

3A-3D. Not used.

3.E The Secretary of State will calculate GAG based on the pupil count at the Academy. In order to calculate GAG for the Academy Financial Year in which the Academy opens, the pupil count will be determined on the same basis as that used by the relevant LA for determining the budget of the maintained Predecessor School.

3.F For Academy Financial Years after that referred to in clause 3.E, the basis of the pupil count for determining GAG will be:

- a) for pupils in Year 11 and below, the Schools Census which is used to fund maintained schools for the financial year overlapping with the Academy Financial Year in question; and
- b) for pupils in Year 12 and above, the formula which is in use at the time for maintained schools.

3.G The Secretary of State may, at his discretion, adjust the basis of the pupil count to take account of any diseconomies of scale which may affect the Academy if it is operating below the planned capacity in clause 2.B. If such an adjustment is made in any Academy Financial Year, this will not change the basis of the pupil count for calculating the following Academy Financial Year's GAG. If the Secretary of State has indicated that additional grant may be payable in such circumstances, the Academy Trust will bid for this additional grant based on need and providing appropriate supporting evidence. The Secretary of State may accept or refuse the bid at his discretion.

3.H Not used.

3.I The Secretary of State recognises that if a Termination Notice or a Termination Warning Notice is served, or the Master Agreement is otherwise terminated, the intake of new pupils during the notice period may decline and therefore payments based on the number of pupils attending the Academy may be insufficient to meet the Academy's needs. In these circumstances the Secretary of State may pay a larger GAG in the notice period, to enable the

Academy to operate effectively.

Other relevant funding

3.J Not used.

3.K The Secretary of State may pay the Academy Trust's costs in connection with the transfer of employees from a Predecessor School under the Transfer of Undertakings (Protection of Employment) Regulations 2006. Such payment will be agreed on a case-by-case basis. The Academy Trust must not budget for such a payment unless the Secretary of State confirms in writing that it will be paid.

Carrying forward of funds

3.L Any additional grant made in accordance with clause 3.I, for a period after the Secretary of State has served a Termination Notice or a Termination Warning Notice under this Agreement, or otherwise terminates the Master Agreement, may be carried forward without limitation or deduction until the circumstances set out in clause 3.I cease to apply or the Academy closes.

4. LAND

"**Land**" means the land at St Francis C of E Primary School, Longfield, Falmouth, Cornwall TR11 4SU being the land registered with title number CL334298 and demised by the Lease.

"**Lease**" means the lease or other occupational agreement between the Academy Trust and a third party (the "**Landlord**") under which the Academy Trust derives title to the Land.

"**Property Notice**" means any order, notice, proposal, demand or other requirement issued by any competent authority (including the Landlord) which materially affects the Academy Trust's ability to use the Land for the purposes of the Academy.

Restrictions on Land transfer

4.A The Academy Trust must:

- a) within 28 days of the signing of this Agreement in circumstances where the Land is transferred to the Academy Trust prior to the date of this Agreement, or otherwise within 28 days of the transfer of the Land to the Academy Trust, apply to the Land Registry using Form RX1 for the following restriction (the "Restriction") to be entered in the proprietorship register for the Land:

No disposition of the registered estate by the proprietor of the registered estate is to be registered without a written consent signed by the Secretary of State for Education, of Sanctuary Buildings, Great Smith Street, London SW1P 3BT;

- b) take any further steps reasonably required to ensure that the Restriction is entered on the proprietorship register;
- c) promptly confirm to the Secretary of State when the Restriction has been registered;
- d) if it has not registered the Restriction, permit the Secretary of State to do so in its place; and
- e) not, without the Secretary of State's consent, apply to disapply, modify, cancel or remove the Restriction, whether by itself, a holding company, a subsidiary company, or a receiver, administrator or liquidator acting in the name of the Academy Trust.

Obligations of the Academy Trust

- 4.B The Academy Trust must keep the Land clean and tidy and make good any damage or deterioration to the Land. The Academy Trust must not do anything to lessen the value or marketability of the Land without the Secretary of State's consent.
- 4.C The Academy Trust must comply with the Lease and promptly enforce its rights against the Landlord.
- 4.D The Academy Trust must not, without the Secretary of State's consent:

- a) terminate, vary, surrender, renew, dispose of or agree any revised rent under the Lease;
 - b) grant any consent or licence; or
 - c) create or allow any encumbrance; or
 - d) part with or share possession or occupation; or
 - e) enter into any onerous or restrictive obligations,
- in respect of all or part of the Land.

Option

4.E The Academy Trust grants and the Secretary of State accepts an option (the “**Option**”) to acquire the Land at nil consideration. The Secretary of State may exercise the Option in writing on termination of this Agreement. If the Option is exercised, completion will take place 28 days after the exercise date in accordance with the Law Society’s Standard Conditions of Sale for Commercial Property in force at that date.

Option Notice

4.F The Academy Trust:

- a) must, within 14 days after acquiring the Land or, if later, after signing this Agreement, apply to the Land Registry on Form AN1 (including a copy of this Agreement) for a notice of the Option (the “**Option Notice**”) to be entered in the register, taking any further steps required to have the Option Notice registered and promptly confirming to the Secretary of State when this has been done;
- b) if it has not registered the Option Notice, agrees that the Secretary of State may apply to register it using Form UN1;
- c) must not, without the Secretary of State’s consent, apply to disapply, modify or remove the Option Notice, whether by itself, a holding company, a subsidiary company, or a receiver, administrator or

liquidator acting in the name of the Academy Trust, and

- d) must, in the case of previously unregistered land, within 14 days after acquiring the Land or, if later, after signing this Agreement, apply to register a Class C(iv) land charge in the Land Charges Registry, and send the Secretary of State a copy of the relevant entry within 7 days after the registration has been completed. If the Secretary of State considers that the Academy Trust has not complied with this clause, he may apply to secure the registration.

Property Notices

4.G If the Academy Trust receives a Property Notice, it must:

- a) send a copy of it to the Secretary of State within 14 days, stating how the Academy Trust intends to respond to it;
- b) promptly give the Secretary of State all the information he asks for about it;
- c) allow the Secretary of State to take all necessary action, with or instead of the Academy Trust, to comply with it, and
- d) use its best endeavours to help the Secretary of State in connection with it.

Breach of Lease

4.H If the Academy Trust is, or if it is reasonably foreseeable that it will be, in material breach of the Lease, the Academy Trust must immediately give written notice to the Secretary of State stating what the breach is and what action the Academy Trust has taken or proposes to take to remedy it, including timescales where appropriate.

4.I After notifying the Secretary of State under clause 4.H, the Academy Trust must:

- a) promptly give the Secretary of State all the information he asks for about the breach;

- b) allow the Secretary of State to take all necessary action, with or instead of the Academy Trust, to remedy or prevent the breach, and
- c) use its best endeavours to help the Secretary of State to remedy or prevent the breach.

Sharing the Land

4.J Where:

- a) the Secretary of State identifies basic or parental need for additional places in the area in which the Academy is situated; and
- b) the Secretary of State then considers that not all the Land is needed for the operation of the Academy at planned capacity,

the Secretary of State must consult with the Academy Trust to determine whether part of the Land could be demised or sublet to another Academy Trust, as the Secretary of State considers appropriate, for the purpose of that Academy Trust establishing and maintaining an educational institution on the Land.

4.K To the extent the Academy Trust and the Secretary of State agree to part of the Land being demised or sublet in accordance with clause 4.J, the Academy Trust must use its best endeavours to procure either the approval of the Landlord or any necessary amendments to the Lease in order to enable it to share occupation of the Land with the incoming Academy Trust and to provide the incoming Academy Trust with security of tenure over the Land occupied by it, and shall enter into any legal arrangements which the Secretary of State requires for this purpose. The Secretary of State shall meet the necessary and reasonable costs incurred by the Academy Trust in connection with this clause.

4.L For the purposes of clause 4.J:

- a) a **basic need** will arise when the forecast demand for pupil places in the area where the Academy is situated is greater than the existing

capacity to provide them;

- b) a **parental need** will arise when the DfE is actually aware of an additional demand for pupil places in the area where the Academy is situated, following representations from parents in that area; and
- c) **planned capacity** has the meaning given in clause 2.B.

4.M The parties' rights and obligations in respect of the Land are set out in the Church Supplemental Agreement or private lease dated _____ 2020 and made between (1) the Secretary of State; (2) the Academy Trust; (3) The Truro Board of Finance Ltd; and (4) The Diocesan Board of Education of the Diocese of Truro. For the purposes of this clause, Land has the meaning given in the Church Supplemental Agreement.

5. TERMINATION

Termination by either party

5.A Either party may give at least seven Academy Financial Years' notice to terminate this Agreement. Such termination would take effect on 31 August of the relevant year.

Termination Warning Notice

5.B The Secretary of State may serve a Termination Warning Notice where he considers that:

- a) the Academy Trust has breached the provisions of this Agreement or the Master Agreement; or
- b) the standards of performance of pupils at the Academy are unacceptably low; or
- c) there has been a serious breakdown in the way the Academy is managed or governed; or
- d) the safety of pupils or staff is threatened, including due to breakdown of discipline; or

e) the Academy is coasting provided he has notified the Academy Trust that it is coasting.

5.C A Termination Warning Notice served under clause 5.B will specify:

- a) the action the Academy Trust must take;
- b) the date by which the action must be completed; and
- c) the date by which the Academy Trust must make any representations, or confirm that it agrees to undertake the specified action.

5.D The Secretary of State will consider any representations from the Academy Trust which he receives by the date specified in the Termination Warning Notice. The Secretary of State may amend the Termination Warning Notice to specify further action which the Academy Trust must take, and the date by which it must be completed.

5.E If the Secretary of State considers that the Academy Trust has not responded to the Termination Warning Notice as specified under clause 5.C(c), or has not completed the action required in the Termination Warning Notice as specified under clauses 5.C(a) and (b) (and any further action specified under clause 5.D) he may serve a Termination Notice.

Termination by the Secretary of State after inspection

5.F If the Chief Inspector gives notice to the Academy Trust that:

- a) special measures are required to be taken in relation to the Academy;
or
- b) the Academy requires significant improvement

the Secretary of State may serve a Termination Warning Notice, specifying the date by which the Academy Trust must make any representations.

5.G In deciding whether to give notice of his intention to terminate under clause 5.F, the Secretary of State will have due regard to the overall performance of the Academy Trust.

5.G.1 Not used.

5.H If the Secretary of State has served a Termination Warning Notice under clause 5.F and:

- a) has not received any representations from the Academy Trust by the date specified in the notice; or
- b) having considered the representations made by the Academy Trust remains satisfied that this Agreement should be terminated;

he may serve a Termination Notice.

5.I Not used.

Termination by the Secretary of State

5.J If the Secretary of State has determined that the Academy will be removed from the Register of Independent Schools and no appeal against that determination is pending, he may serve a Termination Notice.

5.K Not used.

5.L Not used.

5.M Not used.

5.N Not used.

5.O Not used.

Funding and admission during notice period

5.P If the Secretary of State serves a Termination Notice under clause 5.A, the Academy Trust may continue during the notice period to admit pupils to the Academy, and to receive GAG and EAG, in accordance with this Agreement.

5.Q If the Secretary of State serves a Termination Warning Notice or a Termination Notice otherwise than under clause 5.A, the Academy Trust may continue during the notice period to admit pupils to the Academy (unless the

Secretary of State specifies otherwise), and to receive GAG and EAG, in accordance with this Agreement.

Notice of intention to terminate by Academy Trust

- 5.R The Secretary of State will, before the start of each Academy Financial Year, provide the Academy Trust with a final funding allocation indicating the level of GAG and EAG to be provided in the next Academy Financial Year (the “**Funding Allocation**”).
- 5.S If the Academy Trust is of the opinion that, after receipt of the Funding Allocation for the next Academy Financial Year (the “**Critical Year**”) and after taking into account all other resources likely to be available to the Academy, including other funds that are likely to be available to the Academy from other academies operated by the Academy Trust (“**All Other Resources**”), it is likely that the cost of running the Academy during the Critical Year would cause the Academy Trust to become insolvent (and for this reason only) then the Academy Trust may give written notice of its intention to terminate this Agreement on 31 August before the Critical Year.
- 5.T Any notice given by the Academy Trust under clause 5.S must be provided to the Secretary of State within six weeks of the Secretary of State issuing the Funding Allocation. The notice given by the Academy Trust under clause 5.S must specify:
- a) the grounds upon which the Academy Trust’s opinion is based, including:
 - i. evidence of those grounds;
 - ii. any professional accounting advice the Academy Trust has received;
 - iii. a detailed statement of steps which the Academy Trust proposes to take to ensure that the running costs of the Academy are reduced such that costs are less than the Funding Allocation and All Other Resources, and the period of time within which such

steps will be taken; and

- b) the shortfall in the Critical Year between the Funding Allocation and All Other Resources expected to be available to the Academy Trust to run the Academy and the projected expenditure on the Academy; and
- c) a detailed budget of income and expenditure for the Academy during the Critical Year (the "**Projected Budget**").

5.U Both parties will use their best endeavours to agree whether or not the cost of running the Academy during the Critical Year would cause the Academy Trust to become insolvent. Both parties recognise that they will need to engage in a constructive dialogue at the time about how best to provide education for the pupils at the Academy and use their best endeavours to agree a practical solution to the problem.

5.V If no agreement is reached by 30 April (or another date if agreed between the parties) as to whether the cost of running the Academy during the Critical Year would cause the Academy Trust to become insolvent, then that question will be referred to an independent expert (the "**Expert**") for resolution. The Expert's determination will be final and binding on both parties. The Expert will be requested to specify in his determination the amount of the shortfall in funding (the "**Shortfall**").

5.W The Expert will be an insolvency practitioner with significant professional experience of educational institutions or academies. If the parties fail to agree upon the appointment of the Expert then the Expert will be appointed by the President of the Institute of Chartered Accountants in England and Wales. The Expert's fees will be borne equally between the parties.

5.X The Expert will be required in reaching his determination to take account of advice from an educational specialist who is professionally familiar with the issues arising from the budget management of schools. If the parties fail to agree upon the appointment of the educational specialist then the educational specialist will be appointed by the Chairman of the Specialist Schools and Academies Trust (or any successor or equivalent body). The educational

specialist's fees will be borne equally between the parties.

- 5.Y If the Expert determines that the cost of running the Academy during the Critical Year would cause the Academy Trust to become insolvent, and the Secretary of State will not have agreed to provide sufficient additional funding to cover the Shortfall, then the Academy Trust will be entitled to terminate this Agreement, by notice expiring on 31 August before the Critical Year. Any such notice will be given within 21 days after (a) the Expert's determination will have been given to the parties or (b), if later, the Secretary of State will have given written notice of his refusal to provide sufficient additional funding for the Academy to cover the Shortfall.

Effect of termination

- 5.Z If this Agreement is terminated, the Academy will cease to be an Academy within the meaning of sections 1 and 1A of the Academies Act 2010.
- 5.AA Subject to clauses 5.BB and 5.CC, if the Secretary of State terminates this Agreement under clause 5.A, he will indemnify the Academy Trust. If the Secretary of State terminates this Agreement otherwise than under clause 5.A, he may at his discretion indemnify or compensate the Academy Trust.
- 5.BB The amount of any such indemnity or compensation will be determined by the Secretary of State, having regard to representations made to him by the Academy Trust, and will be paid as and when the Secretary of State considers appropriate.
- 5.CC The categories of expenditure incurred by the Academy Trust in consequence of termination, for which the Secretary of State may indemnify the Academy Trust under clauses 5.AA, may include:
- a) staff compensation and redundancy payments;
 - b) compensation payments in respect of broken contracts;
 - c) expenses of disposing of assets or adapting them for other purposes;
 - d) legal and other professional fees; and

e) dissolution expenses.

5.DD If this Agreement is terminated, and the Academy Trust owns capital assets which have been partly or wholly funded by HM Government, the Academy Trust must, as soon as possible after the termination date:

- a) transfer a proportion of those capital assets, equal to the proportion of the original financial contribution made by HM Government, to a nominee of the Secretary of State to use for educational purposes; or
- b) if the Secretary of State directs that a transfer under clause 5.DD(a) is not required, pay to the Secretary of State at the termination date (or, by agreement with the Secretary of State, at the date of their subsequent disposal) a sum equivalent to the proportion of the original financial contribution made by HM Government.

5.EE The Secretary of State may:

- a) Waive all or part of the repayment due under sub-clause 5.DD(b) if the Academy Trust obtains his permission to invest the sale proceeds for its charitable purposes; or
- b) direct the Academy Trust to pay all or part of the sale proceeds to the relevant LA.

6. OTHER CONTRACTUAL ARRANGEMENTS

Annexes

6.A Any annexes to this Agreement form part of and are incorporated into this Agreement.

The Master Agreement

6.B Except as expressly provided in this Agreement, all provisions of the Master Agreement have full force and effect.

General

- 6.C The Academy Trust cannot assign this Agreement.
- 6.D Failure to exercise, or a delay in exercising, any right or remedy of the Secretary of State under this Agreement (including the right to terminate this Agreement), or a single or partial exercise of such a right or remedy, is not a waiver of, and does not prevent or restrict any initial or further exercise of, that or any other right or remedy.
- 6.E Termination of this Agreement will not affect the accrued rights, remedies, obligations or liabilities of the parties existing at termination.
- 6.F This Agreement may be executed in any number of counterparts, each of which when executed and delivered shall constitute a duplicate original, but all of which will together constitute the same agreement.
- 6.G This Agreement and any dispute or claim arising out of or in connection with it or its subject matter or formation (including non-contractual disputes or claims) shall be governed by and construed in accordance with the law of England and Wales, and submitted to the exclusive jurisdiction of the courts of England and Wales.
- 6.H The Secretary of State agrees that this Agreement shall be interpreted in a way which is compatible with the provisions of clauses 20A-F and 23A-H (if used) of the Church Supplemental Agreement dated _____ 2020 and made between (1) the Secretary of State; (2) the Academy Trust; (3) The Truro Diocesan Board of Finance Ltd; and (4) The Diocesan Board of Education of the Diocese of Truro.

This Agreement was executed as a Deed on

2020

Executed on behalf of the **Academy Trust** by:

..... *K. M. Cross*

Director

and

.....

Director

or

E. O. L.
.....

Company Secretary

or

ANDREA SOLTYS
.....

Witness

Name: *ANDREA SOLTYS*

Address: *HOLLY TREE FLD
TRURO TR4 8RT*

The Corporate Seal of

THE SECRETARY OF STATE FOR EDUCATION

affixed to this deed is authenticated by:

.....

Duly Authorised

ANNEXES

7. ADMISSION OF CHILDREN AND YOUNG PEOPLE WITH EDUCATION, HEALTH AND CARE PLANS

“EHC plan” means an Education, Health and Care plan made under section 37 of the Children and Families Act 2014.

7.A Except as set out in clause 8 below, the Children and Families Act 2014 imposes duties directly on Academies in respect of pupils with special educational needs, including the admission of pupils with EHC plans. If an Academy Trust considers that a LA should not have named the Academy in an EHC plan, it may ask the Secretary of State to determine whether the LA has acted unreasonably, and to make an order directing the LA to reconsider. The Academy Trust must admit the pupil if such a determination is pending. The Secretary of State’s determination as to whether the LA acted unreasonably will be final, subject to any right of appeal which a parent of the pupil may have to the First Tier Tribunal (Special Educational Needs and Disability) or the Upper Tribunal Administrative Appeals Chamber.

8. ADMISSION OF CHILDREN WITH A STATEMENT OF SPECIAL EDUCATIONAL NEEDS

(Clauses 8.A-8.G only apply where the pupil has a statement of special educational needs (SEN) rather than an EHC plan and where they therefore continue to be subject to the relevant provisions of the Education Act 1996. EHC plans are replacing statements of SEN but although all statements of SEN should have been converted to an EHC plan by the 1 April 2018 this clause is retained to protect pupils who still have a statement of special education need after this date. The detail on the drafting of a statement below is retained to protect pupils in exceptional circumstances.)

“Statement of SEN” means a statement made under section 324 of the Education Act 1996.

8.A The Academy Trust must admit all children with a Statement of SEN naming the Academy.

- 8.B The Academy Trust must have regard to the Special Educational Needs Code of practice 2001 when dealing with statements of SEN.
- 8.C Where the LA sends the Academy Trust a draft statement with a proposal that the Academy is named in the final statement, the Academy Trust must respond within 15 working days unless the time period falls within a school holiday that is longer than two weeks in which case the Academy Trust should respond within 15 working days of the end of the school holiday.
- 8.D In its response the Academy Trust must either:
- a. consent to being named in the final statement or
 - b. explain why it believes that admitting the child would be incompatible with the provision of efficient education for other children and the efficient use of resources, including why no reasonable steps could secure compatibility. In doing so the Academy Trust must have regard to the relevant legislation and Code of Practice. If the LA does not agree with the Academy Trust's response, and names the Academy in the child's Statement of SEN, the Academy Trust must admit the child to the school as specified in the statement or otherwise by the LA. The final decision as to whether to name the Academy falls to the LA.
- 8.E If the Academy Trust considers that the LA should not have named the Academy in the statement of SEN, it may ask the Secretary of State to determine whether the LA has acted unreasonably, and to make an order directing the LA to reconsider. The Academy Trust must admit the pupil if such a determination is pending. The Secretary of State's determination will be final, subject only to any right of appeal which a parent of the child may have to the First-tier Tribunal (Special Educational Needs and Disability) or the Upper Tribunal Administrative Appeals Chamber.
- 8.F If a parent of a child for whom the LA maintains a statement appeals to the First-tier Tribunal (Special Educational Needs and Disability) or the Upper Tribunal Administrative Appeals Chamber, either for or against the naming of

the Academy in the child's statement, then the Tribunal's decision will be binding, even if it is different from that of the Secretary of State.

- 8.G Where it has been finally determined that the Academy be named in a child's Statement of SEN, the Academy Trust must admit the child to the Academy, notwithstanding any other admissions requirements in this Agreement.
- 8.H Clauses 8.A to 8.G only apply insofar as the relevant provisions of the Children and Families Act 2014 relating to SEN and disability do not apply to Academies and Free Schools.



Department
for Education

© Crown copyright 2018

You may re-use this document/publication (not including logos) free of charge in any format or medium, under the terms of the Open Government Licence v2.0. Where we have identified any third party copyright information you will need to obtain permission from the copyright holders concerned.

To view this licence:

Visit: www.nationalarchives.gov.uk/doc/open-government-licence/version/2
email: psi@nationalarchives.gsi.gov.uk

We welcome feedback. If you would like to make any comments about this publication, please email AFSPD.feedback@education.gov.uk, quoting the title of this document. Specific project queries should be sent to the allocated project lead/lead contact.

About this publication:

enquiries www.education.gov.uk/contactus
download www.gov.uk/government/publications

Reference: DFE-00440-2014



Follow us on Twitter:
[@educationgovuk](https://twitter.com/educationgovuk)



Like us on Facebook:
facebook.com/educationgovuk

Schedule 2
Supplemental Funding Agreement



Department
for Education

Church of England academies: Church supplemental agreement: single and multi-academy model

November 2018

Contents

CONTENTS	2
INTRODUCTION	3
LEGAL AGREEMENT FOR USE OF LAND	5
PARTNERSHIP IN THE PROVISION OF EDUCATION	6
PROTECTION OF PUBLIC INVESTMENT IN LAND	7
CAPITAL GRANTS	10
INTERVENTION AND SUPPORT	11
TERMINATION	14
MISCELLANEOUS	14

INTRODUCTION

- 1) This Agreement is being entered into in acknowledgement of the consent hereby given by Truro Diocesan Board of Finance Limited (The) to the conversion of St Francis C of E Primary School to academy and the completion of a Supplemental Funding Agreement (the "Supplemental Funding Agreement") which, with its Master Funding Agreement (the "Master Funding Agreement"), dated 30th June 2016 as varied by a Deed of Variation dated 28th August 2019 (together (the "Funding Agreement") made under section 1 of the Academies Act 2010 between the Secretary of State for Education ("the Secretary of State") and Kernow Learning Multi Academy Trust a company limited by guarantee registered at Companies House with company number 07394649 ("the Company").
- 2) This Agreement is made between
 - a) the Secretary of State; and
 - b) Truro Diocesan Board of Finance Limited (The) a company limited by guarantee registered at Companies House with company number 00049825 whose registered office is at Church House, Woodlands Court, Truro Business Park, Threemilestone, Truro, Cornwall TR4 9HN ("the Board"); and
 - c) The Board of Education of the Diocese of Truro established pursuant to the Diocesan Boards of Education Measure 1991 (the "appropriate diocesan authority" for the Academy for the purposes of the Education Acts (which shall include the Academies Act 2010)) is also a party to this Agreement in recognition of its role in relation to the Academy ("the Diocesan Authority"); and
 - d) the Company.
- 3) NOT USED.
- 4) The Company is also a party to this Agreement solely to acknowledge the commitments made by both the Secretary of State and the Board to each other and to make the commitments set out in clauses 14 and 28.

- 5) In this Agreement the following words and expressions shall have the following meanings:-

“Articles of Association” means the Memorandum and Articles of Association of the Company for the time being in force;

“Capital Grant” has the meaning given to it in clause 3.5 of the Master Funding Agreement;

“DfE” means Department for Education;

“Insurance/cover” means either (i) a commercial insurance policy taken out with a reputable insurance office or (ii) cover through the Risk Protection Arrangement for academy trust companies provided by the Secretary of State (“the Risk Protection Arrangement”);

“Insured/covered Risks” means fire, lightning, explosion, earthquake, storm, tempest, flood, subsidence, landslip, heave impact, terrorism, bursting or overflowing of water tanks and pipes, earthquake, damage by aircraft and other aerial devices or articles dropped there from, riot and civil commotion, labour disturbance and malicious damage and such other risks as the Board or Company (as determined by clause 14) insures against from time to time subject in all cases to any exclusions or limitations as may apply from time to time;

“Land” means the land (including for the avoidance of doubt all buildings, structures, standing water, landscaping and other erections) owned by the Board situated at and known as St Francis C of E Primary School, Longfield, Falmouth, Cornwall TR11 4SU and registered under title numbers CL57778 and CL115892 from which the Academy operates;

“Termination Warning Notice” means any warning notice that may be served under and in accordance with the terms of the Funding Agreement.

- 6) The Interpretation Act 1978 shall apply for the interpretation of this Agreement as

it applies for the interpretation of an Act of Parliament, and references to:

“party” means any party to this Agreement;

“persons” includes a body of persons, corporate or incorporate;

“school” shall where the context so admits be references to the Academy.

- 7) Expressions defined in this Agreement shall have the same meaning where used in any Annex to this Agreement.

LEGAL AGREEMENT FOR USE OF LAND

- 8) In consideration of:

a) the Company undertaking to the Secretary of State to establish and maintain, and to carry on or provide for the carrying on of, an independent school in England to be known as St Francis C of E Primary School (“the Academy”) and having such characteristics as are referred to in clause 1.13 of the Master Funding Agreement and in the Articles of Association; and

- b) the Secretary of State:

- i. agreeing to make payments to the Company in accordance with the conditions and requirements set out in the Funding Agreement, and
- ii. undertaking to the Board and the Diocesan Authority as set out in this Agreement;

the Board undertake to the Secretary of State to make the Land available for use by the Company in a manner consistent with any restrictions imposed on the Board at law and pursuant to any trust deed governing the Board’s ownership of the Land and with the terms of this Agreement.

- 9) This Agreement shall commence on the date hereof and shall subject to clause 10 (and except in respect of clause 16) continue in force until the earlier of:

- a) the termination of the Funding Agreement; and
 - b) the date upon which any termination of this Agreement arises pursuant to clause 24.
- 10) The termination of this Agreement howsoever arising is without prejudice to the rights, duties and liabilities of any party hereto accrued prior to termination.
- 11) Clause 16 of this Agreement shall continue to apply for as long as the Secretary of State has power to exercise any discretion in relation to the Land pursuant to Schedule 1 of the Academies Act 2010.

PARTNERSHIP IN THE PROVISION OF EDUCATION

- 12) This Agreement recognises the desire of the parties to foster the development and provision of high quality education in particular at the Academy and in the area which it serves and the parties acknowledge the commitment being made by each to this aim. Recognising the Board and the Diocesan Authority's respective strategic roles in the provision of education through the Diocesan family of Church of England schools both in relation to the Academy and more generally (which role has been acknowledged in but is not derived from the Education Acts (as defined pursuant to the Education Act 1996)), the Secretary of State acknowledges the value of:
- a) maintaining a good working relationship between the parties at all levels, and
 - b) the support (financial and otherwise) provided to the Company by the Board and the Diocesan Authority; and

agrees:

- A) to consider the use of his termination powers as set out in the Funding Agreement if requested to do so in writing by the Diocesan Authority in consequence of (i) unacceptable standards as measured by the relevant statutory denominational inspection using criteria equivalent to those triggering

the right to serve a Termination Warning Notice under the Funding Agreement or (ii) a serious breakdown in the way the Academy is managed or governed such that the ethos requirements of designation or conditions set out in the Funding Agreement are no longer being complied with; and

B) to maintain an open and frank dialogue with the Board and the Diocesan Authority so that any matters that in the reasonable opinion of the parties may have a significant effect on the running of the Academy as a Church of England school shall be discussed in an appropriate manner recognising each party's viewpoint.

- 13) Whilst recognising the desire of the parties to work together in good faith and with mutual respect, nothing in this Agreement shall:
- a) grant the Company any interest in or control over the Land.
 - b) interfere with the right of each party to arrange its affairs in whatever manner it considers fit in order to perform its obligations under this Agreement in the manner in which it considers to be the most effective and efficient;
 - c) oblige any party to incur any additional cost or expense or suffer any undue loss in the proper performance of its obligations under this Agreement;
 - d) fetter the ability of any party to exercise or fulfil its contractual or statutory powers and duties including under the Diocesan Boards of Education Measure 1991;
 - e) prevent the Company from teaching the tenets of the Church of England.

PROTECTION OF PUBLIC INVESTMENT IN LAND

- 14) Whilst the Academy operates from the Land otherwise than pursuant to a lease between the Board and the Company and in recognition of the funding provided by the Secretary of State to the Company for the running costs of the Academy, including, but not limited to, grant advanced for the purposes of enabling repairs,

servicing, maintenance and arranging for appropriate insurance of any buildings on the Land and its grounds, provided that the Company meets the cost of such repairs, servicing, maintenance and insurance, including all reasonable costs of the Board, the Board will:

- a) facilitate any maintenance, upkeep or replacement of any buildings or facilities on the Land by the Company so that the Company may keep the Land clean and tidy and may make good any damage it causes to the Land and / or any deterioration to the condition of the Land consequent upon its use of the same that may arise from the date of this Agreement;
- b) facilitate the following:
 - i) at the Company's expense the maintaining of insurance of the land by the Company in the joint names of the Company and the Board with a reputable insurance office or through the Risk Protection Arrangement against loss or damage by the Insured Risks in the sum the Company is advised represents the reinstatement value of the Land from time to time;
 - ii) the payment of the premiums for insurance by the Company promptly as they become due and maintaining in force by the Company of the policies of insurance on the Land;
 - iii) following the incidence of damage to or destruction of the Land and subject to receipt of all necessary consents licences permissions and the like the application of the proceeds of the policy of the insurance received for those purposes in the rebuilding and reinstating of the Land by the Company (provided that this clause should be satisfied if the Company and/or the Board provides premises not necessarily identical to the Land as the same existing prior to such damage or destruction occurring) as soon as may be reasonably practicable;
 - iv) the production by the Company to the Board and the Secretary of State

of a copy of any insurance policy whenever reasonably requested and the receipt for the last or other evidence of renewal and up to date details of the amount of cover (but no more often than once in any period of 12 months in both cases);

v) the Company insuring against liability in respect of property owners' and third party risks including occupiers liability;

c) together with the Company not knowingly do anything whereby any policy of insurance relating to the Land may become void or voidable; and

the Company will:

d) keep the Land insured in the joint names of the Company and the Board with a reputable insurance office or through the Risk Protection Arrangement against loss or damage by the Insured Risks in the sum the Company is advised represents the reinstatement value of the Land from time to time;

e) pay the premiums for insurance promptly as they become due and maintain in force the policies of insurance on the Land;

f) following the incidence of damage to or destruction of the Land and subject to receipt of all necessary consents licences permissions and the like apply the proceeds of the policy of the insurance received for those purposes in rebuilding and reinstating the Land (provided that this clause should be satisfied if the Company provides premises not necessarily identical to the Land as the same existing prior to such damage or destruction occurring) as soon as may be reasonably practicable;

g) produce to the Board and the Secretary of State a copy of any insurance policy whenever reasonably requested and the receipt for the last or other evidence of renewal and up to date details of the amount of cover (but no more often than once in any period of 12 months in both cases);

h) not knowingly do anything whereby any policy of insurance relating to the

Land may become void or voidable;

- i) insure against liability in respect of property owners' and third party risks including occupiers liability.
 - j) meet all reasonable costs of the Board in relation to insurance, repairs, scrutiny, maintenance and improvement of the Land.
- 15) While the Academy operates from the Land or part of it pursuant to a lease between the Board and the Company in so far as clause 14 regulates occupation the terms of the lease shall prevail.
- 16) In the exercise of any discretion that the Secretary of State shall have either in relation to the Land as a consequence of this agreement or pursuant to Schedule 1 of the Academies Act 2010, the Secretary of State agrees to comply with any guidance issued by him in relation to the disposal of publicly funded land that is no longer to be used for the Academy.
- 17) In relation to any land owned or leased by the Company (excluding any land leased to the Company by the Board, the Secretary of State agrees not to give consent to any disposal or grant of security in respect of such land to the Company as envisaged in the Funding Agreement without first consulting the Board and the Diocesan Authority and having due regard to any concerns expressed by the Board and the Diocesan Authority.

CAPITAL GRANTS

- 18) The Board and the Diocesan Authority acknowledge the Secretary of State's power to pay Capital Grant to the Company and in recognition of the Board's and the Diocesan Authority's interest in any Capital Grant paid in relation to expenditure on Land, the Secretary of State commits to the following:
- a) to acknowledge the Board and the Diocesan Authority's right to consent to the carrying out of any works to the Land whether or not such works are to be paid for from any Capital Grant;

- b) to recognise the Board and the Diocesan Authority's interest in ensuring that any works to the Land are carried out properly and that the Board or Diocesan Authority may be procuring or providing support to the Company in the procurement of such works; and
 - c) at the Secretary of State's discretion, to make any Capital Grant to the Diocesan Authority in respect of capital expenditure incurred or to be incurred by them on behalf of the Company.
- 19) To the extent that the Secretary of State considers it necessary, in order to protect the value of any future public investment in the Land and in recognition of the Board and the Diocesan Authority allowing the Land to be used for the purposes of the Academy, then the Secretary of State may require the Company and the Board and the Diocesan Authority to enter into a further agreement in relation to such further public investment and Capital Grant. If the Secretary of State determines such further agreement is required, then the parties agree to negotiate in good faith with a view to reaching agreement to enable such Capital Grant, and future public investment, to be paid.

INTERVENTION AND SUPPORT

- 20) The Board and the Diocesan Authority acknowledge the Secretary of State's right to terminate the Funding Agreement in the circumstances envisaged in the Funding Agreement. The Secretary of State agrees with the Board and the Diocesan Authority before taking any such action and in particular serving any Termination Warning Notice to notify the Board and the Diocesan Authority that he intends to take action giving his reasons for such action and to allow the Board and the Diocesan Authority a reasonable opportunity to make representations regarding such action, including any actions that the Board and the Diocesan Authority intend to take to remedy any failing of the Academy, to which the Secretary of State will have due regard before finally taking any action.
- 20A) Without prejudice to the generality of clause 20 above, to the extent the Secretary of State has concerns as to the suitability of any director or member of

the Company (the **Relevant Appointee**), the Secretary of State will notify the Diocesan Authority of his concerns before exercising any available remedies in respect of the Relevant Appointee under the Funding Agreement.

20B) As soon as possible following the Secretary of State providing notification under clause 20A, the Secretary of State and the Diocesan Authority will meet to discuss the Secretary of State's concerns. The Diocesan Authority agrees to provide any further information on the Relevant Appointee which is reasonably requested by the Secretary of State and:

(a) the Diocesan Authority acknowledges that the Secretary of State may, in his absolute discretion, carry out any additional due diligence on the Relevant Appointee and agrees to act reasonably in co-operating with any requests for assistance by the Secretary of State; and

(b) the Secretary of State agrees to share any information of concern with the Diocesan Authority and to consult with the Diocesan Authority as to what remedial action should be taken in respect of the Relevant Appointee.

20C) To the extent the Diocesan Authority agrees that the Secretary of State's concerns regarding a Relevant Appointee have merit, the Secretary of State acknowledges that the Diocesan Authority may, in the first instance, determine what remedial action to take in respect of that Relevant Appointee before the Secretary of State exercises any available remedies under the Funding Agreement.

20D) If the Diocesan Authority does not agree with the Secretary of State's concerns regarding a Relevant Appointee, or the Diocesan Authority (in the Secretary of State's opinion) unreasonably delays taking remedial action or does not otherwise (in the Secretary of State's opinion) take appropriate remedial action, the Secretary of State shall issue a notice under the Funding Agreement requesting that the Diocesan Authority reconsiders its approach, together with any further supporting information of concern.

- 20E) To the extent the Diocesan Authority does not reconsider its approach, or otherwise does not take remedial action to the Secretary of State's satisfaction, the Secretary of State reserves the right to exercise any available remedies available to him under the Funding Agreement.
- 20F) Notwithstanding clauses 20D and 20E, the Secretary of State acknowledges and agrees that the decision to remove a Relevant Appointee is the sole responsibility of the Diocesan Authority.
- 21) Not used.
- 22) In the spirit of partnership, where the Board and/or the Diocesan Authority put forward a school improvement plan, whether or not in the circumstances envisaged in clause 20, the Secretary of State will consider any proposals within it and in good faith will consider any resource or funding implications, without, for the avoidance of doubt, being under any obligation pursuant to this Agreement to agree to fund such proposals.
- 23) The Secretary of State agrees to meet the costs of any relevant statutory denominational inspection proposed by the Board or the Diocesan Authority provided these do not occur any more often than once every three years.
- 23A) Not used.
- 23B) Not used.
- 23C) Not used.
- 23D) Not used.
- 23E) The parties acknowledge that clauses 2.24 and 2.25 of the Master Funding Agreement apply to all academies.
- 23F) The parties recognise that the provisions set out in clauses 2.24 and 2.25 of the Master Funding Agreement prohibit the teaching as scientifically proven fact, of theories which are contrary to scientific evidence and ensure that schools teach

evolutionary theory. The parties recognise that they apply to church schools as they would to all other schools. The parties also recognise that the requirement on every academy and free school to provide a broad and balanced curriculum, including the provision for the teaching of evolution, does not preclude church academies' curriculum conforming to, or their teaching being in accordance with, the tenets of the Church of England.

- 23G) The Secretary of State acknowledges that clauses 2.24 and 2.25 of the Master Agreement, and clause 23F above, do not prevent discussion of a range of beliefs about the origins of the Earth and living things, as long as it is not presented as a valid alternative to academically defensible scientific facts.

TERMINATION

- 24) The Board may give not less than two years written notice to the Company and the Secretary of State to terminate this Agreement.
- 25) In the event of any termination of the Funding Agreement in circumstances where the Academy would not otherwise be closing, the Secretary of State will have due regard to any wishes of the Board and/or the Diocesan Authority with regard to the future of the school as a "voluntary" maintained school for the purposes of the School Standards & Framework Act 1998.
- 26) Notwithstanding any termination or expiry of this Agreement the provisions of clause 25 shall continue to apply.

MISCELLANEOUS

- 27) Any notice or other communication concerning this Agreement shall be sent, in the case of a notice or communication from the Secretary of State to the Board and the Diocesan Authority at their registered offices or such other addressees/addresses as may be notified in writing from time to time by the Board and the Diocesan Authority and, in the case of a notice or communication from the Board and the Diocesan Authority to the Secretary of State to Head of

Academies Division, Department for Education, Sanctuary Buildings, Great Smith Street, London SW1P 3BT; or such other address as may be notified from time to time by the Secretary of State and where any such notice or communication is sent by post, unless the contrary is proved, it shall be deemed, subject to satisfactory proof of posting, to be effected at the time at which the letter would be received in the ordinary course of post.

- 28) a) The Company shall not enter into any other agreement with any person, the terms of which are inconsistent with, or contrary, the terms of this Agreement.
- (b) If the Company, in breach of clause 28(a), enters into such an agreement, then, in so far as any clause or clauses of that agreement are inconsistent with, or contrary to, the terms of this Agreement ('the conflicting clauses') the parties agree that, to the extent they are lawfully permitted to do so, they will:
- i) treat the conflicting clauses as if they were void and of no effect;
 - ii) not rely on or enforce the conflicting clauses; and
 - iii) not act in accordance with the conflicting clauses.
- 29) No term of this Agreement is intended to give any entitlement as against any party to any person who is not a party to this Agreement and no term of this Agreement may be enforced by any person other than a party under the Contracts (Rights of Third Parties) Act 1999.
- 30) Save for clause 28 the obligations of the parties are several and for the avoidance of doubt none of the Company, the Board or the Diocesan Authority shall be deemed to be liable in respect of the acts or omissions of the other as between these parties and the Secretary of State.
- 31) For the avoidance of doubt nothing in this Agreement is intended to vary or amend any provision of the Funding Agreement or any obligation arising under it.

This Agreement was executed as a Deed on

2020

Executed on behalf of KERNOW LEARNING MULTI ACADEMY TRUST by:

.....K.M. Crossy.....
Director

In the presence of:

Witness.....~~AMY SWEET~~ AMY SWEET
Address.....13 BULLOCK Drive, Newquay, TR7 3FB
Occupation.....P.A. to CEO

Executed on behalf of Truro Diocesan Board of Finance Limited (The) by acting by:

.....
Director

.....
Director/Secretary

Executed on behalf of the Diocesan Authority by
Truro Diocesan Board of Finance Limited (The) acting by

.....
Director/

.....
Director/Secretary

The Corporate Seal of the Secretary of State for Education, hereunto affixed is authenticated by:

.....

Duly Authorised



Department
for Education

© Crown copyright 2018

This publication (not including logos) is licensed under the terms of the Open Government Licence v3.0 except where otherwise stated. Where we have identified any third party copyright information you will need to obtain permission from the copyright holders concerned.

To view this licence:

visit www.nationalarchives.gov.uk/doc/open-government-licence/version/3
email psi@nationalarchives.gsi.gov.uk
write to Information Policy Team, The National Archives, Kew, London, TW9 4DU

About this publication:

enquiries www.education.gov.uk/contactus
download www.gov.uk/government/publications

Reference: DFE-00324-2018



Follow us on Twitter:
[@educationgovuk](https://twitter.com/educationgovuk)



Like us on Facebook:
facebook.com/educationgovuk